



## **COMENIUS REGIO PARTNERSHIP**

# **“ENSURING THE QUALITY IN VET THROUGH THE STRATEGY AND THE IMPLEMENTATION IN THE EUROPEAN COORDINATES “**

**AGREEMENT N° 2012-1-RO1-COM13-22681-2**

**18 NOVEMBER 2013**

# Objectives



- **To assess students' satisfaction about their school in 5 areas:**
  - a) Teachers
  - b) Teacher-class interaction
  - c) Classmates
  - d) School
- **To assess teachers' satisfaction about their school in 5 areas:**
  - a) Collaboration with students and parents
  - b) School management
  - c) School quality
  - d) Overall judgement
- **To assess quality and acceptance of questionnaire itself**

# Methods - 1



- **Questionnaire translated into Italian**
  - Then administered to
  - 85 students in 5 classes (1→5) in 1 school (Cossa)
- **10 items added (on questionnaire quality)**
  - Then administered to
  - 78 students in 5 classes (1→5) in 1 school (Ipsia)
- **Questionnaire to teachers**
  - Same methods

# Methods - 2



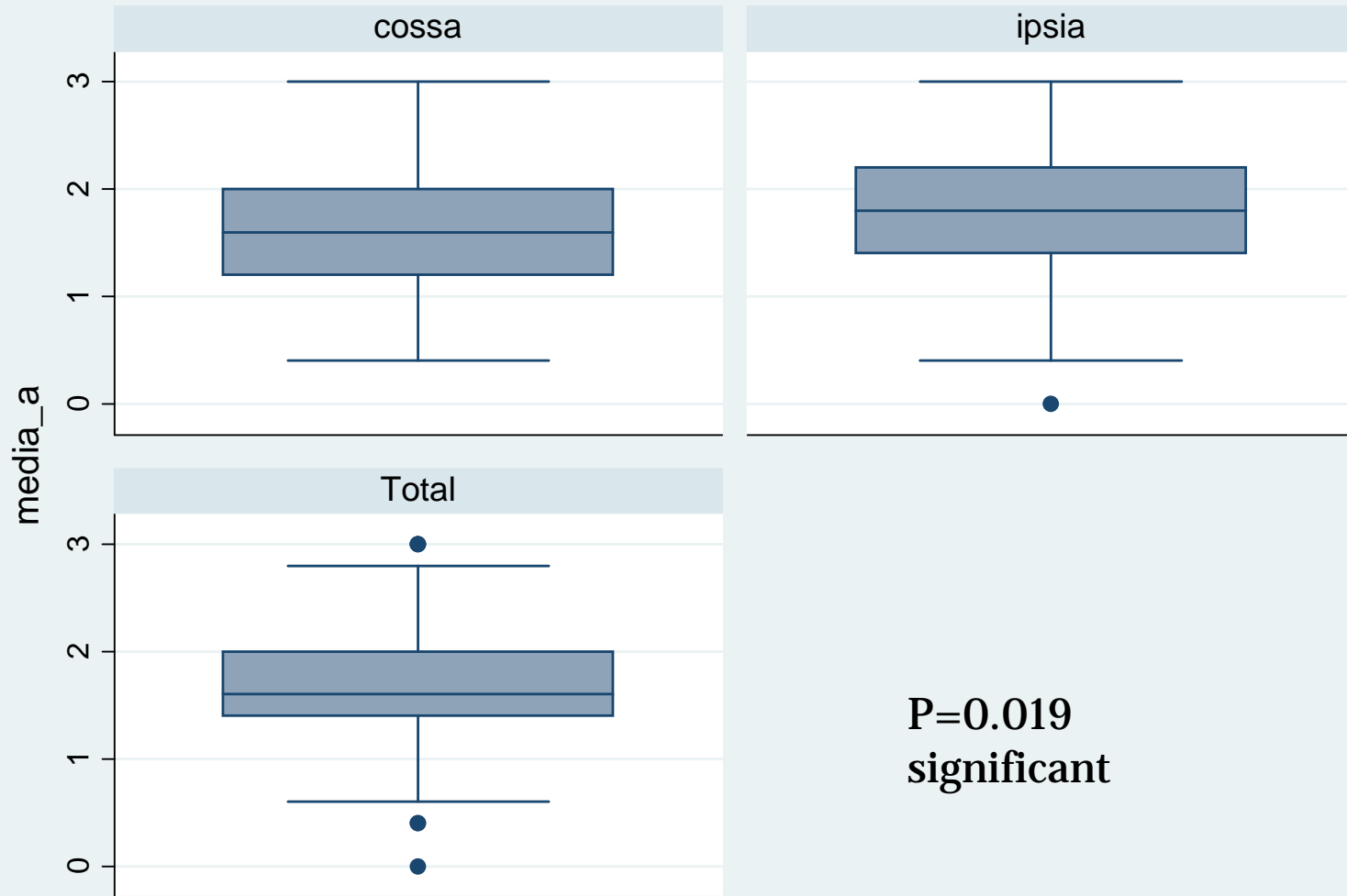
- **Within each area, we calculated the average of items**
- **Statistics by school, by class, and overall**
  - ✦ Descriptive
  - ✦ Graphs
- For average scores of each area
  - ✦ Median (interquartile range) min-max range
  - ✦ Box-and-whiskers-plot
- For answers to each item
  - ✦ Number and percentage
  - ✦ Histograms
- Statistical tests for differences
  - ✦ P-value = probability of a chance result (when  $<0.05$  = real difference)

# Results



**FOR STUDENTS**

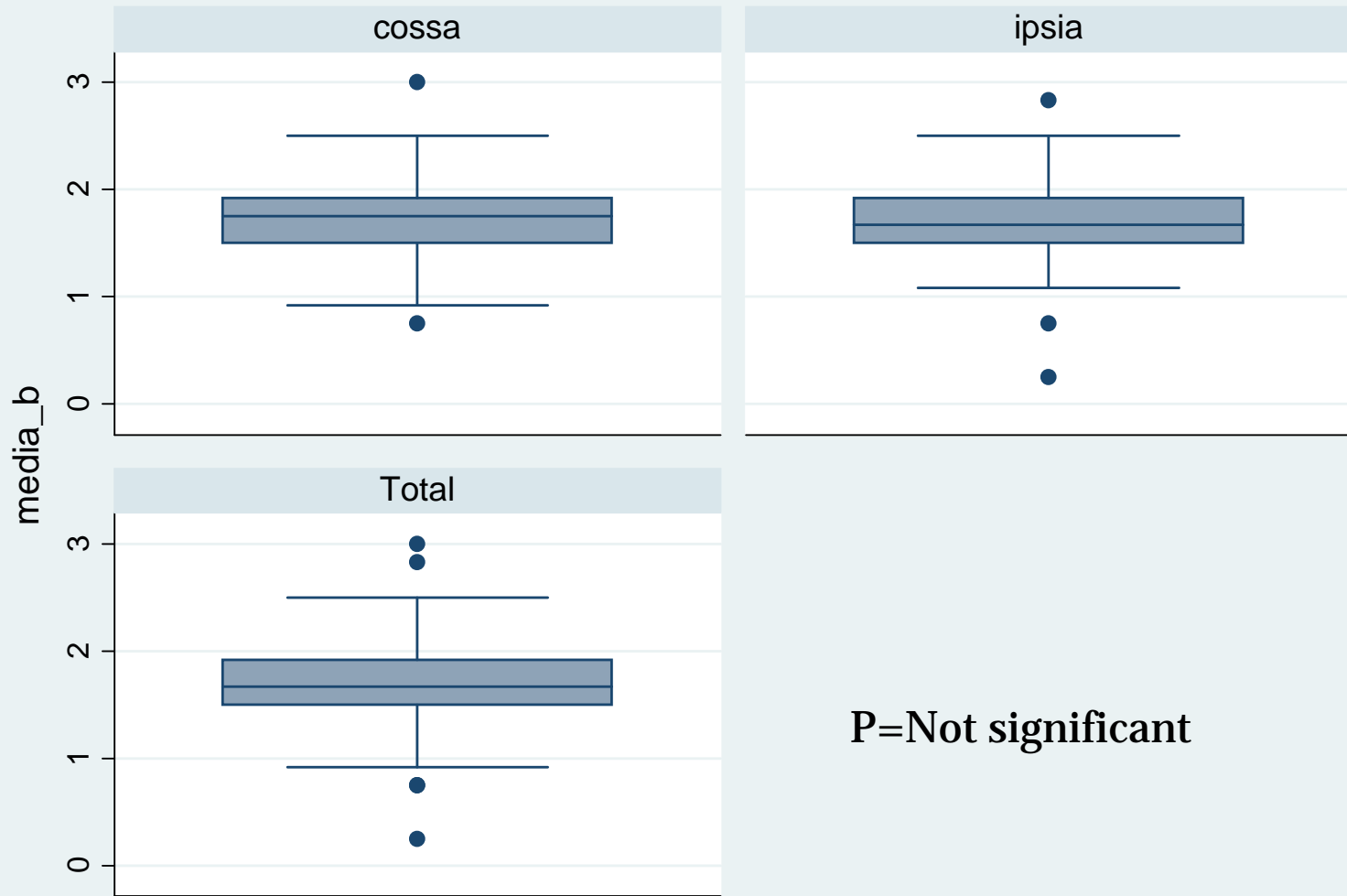
# Area A: teachers



Graphs by school

**P=0.019**  
**significant**

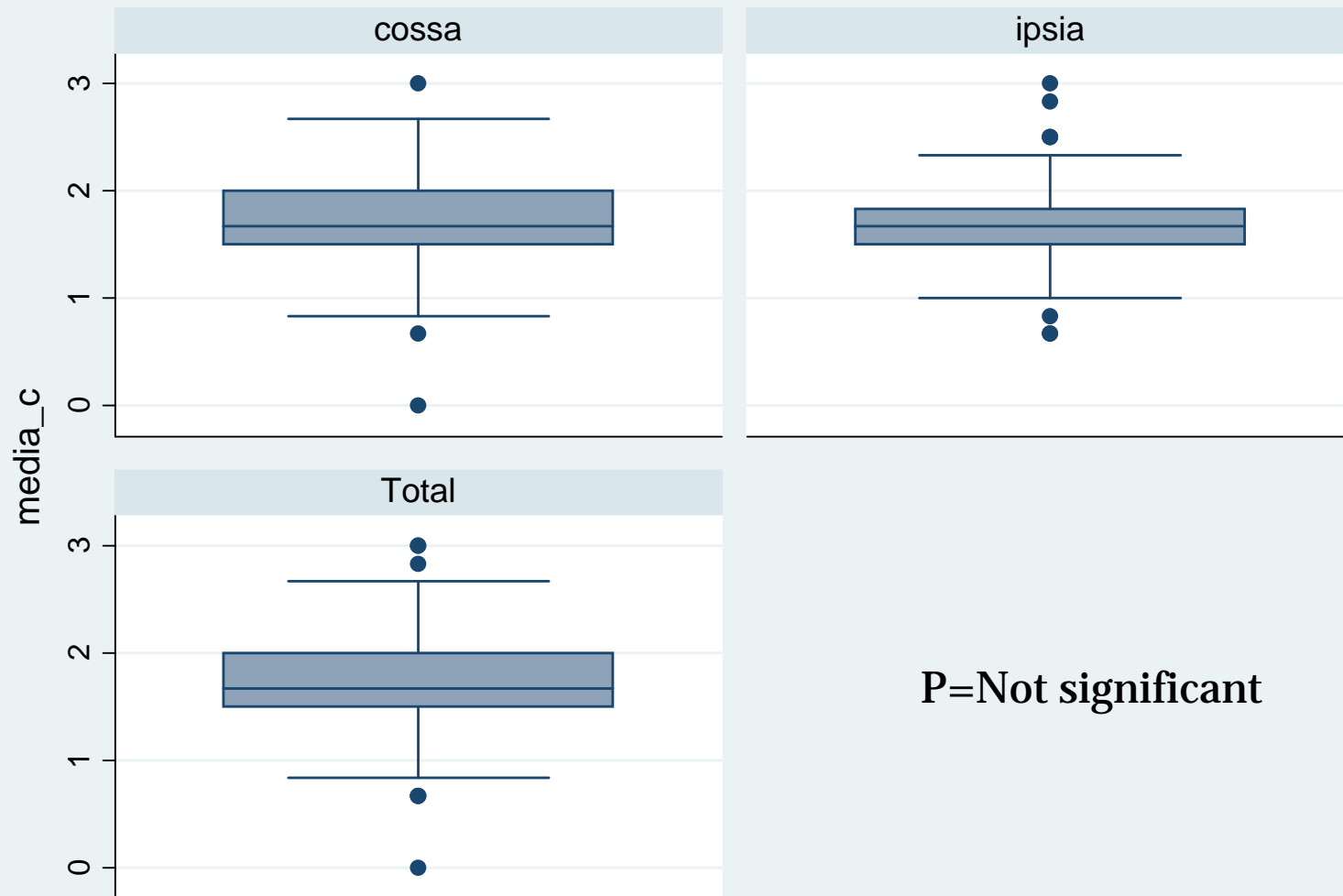
# Area B: teacher-class interaction



P=Not significant

Graphs by school

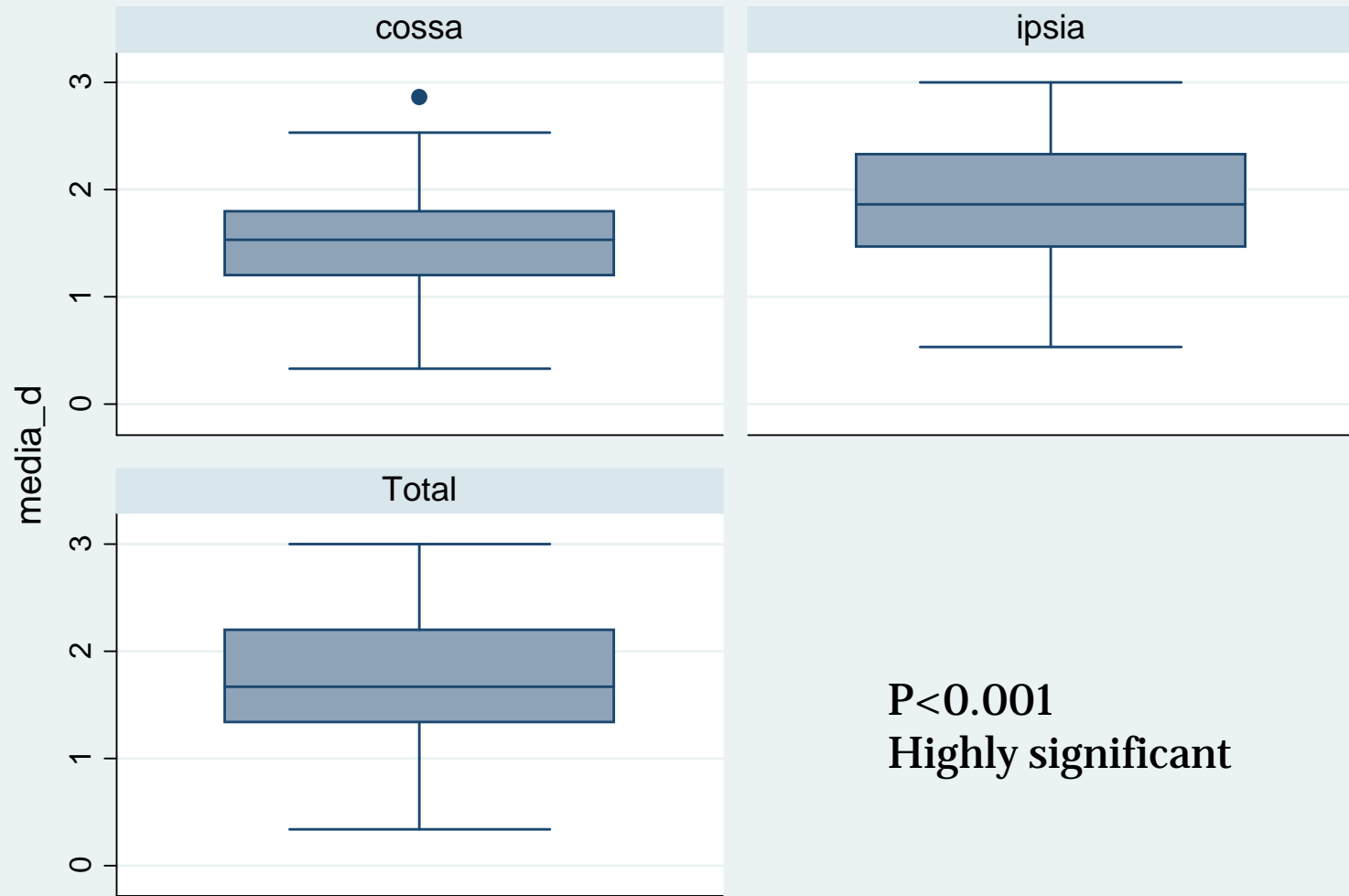
# Area C: classmates



P=Not significant



# Area D: School

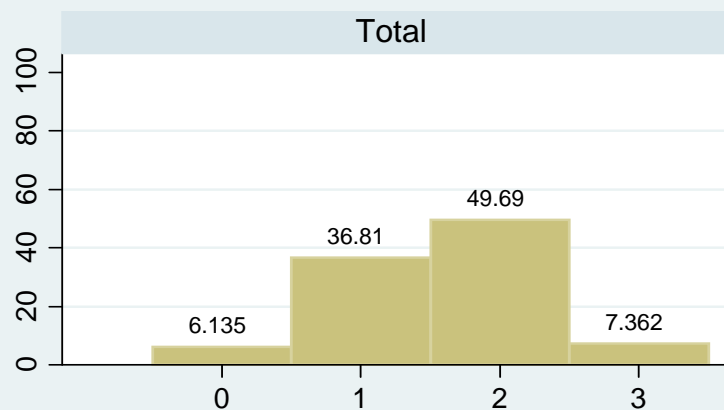
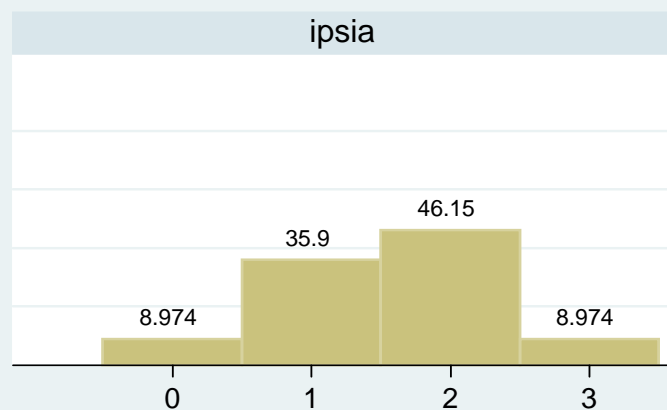
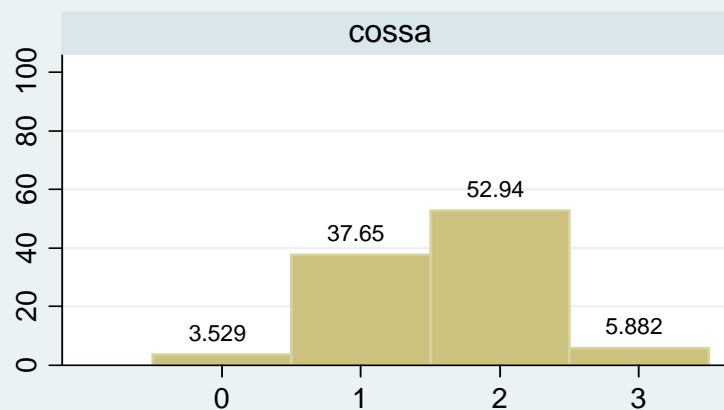


**P<0.001**  
**Highly significant**

# Area A by school



question a1

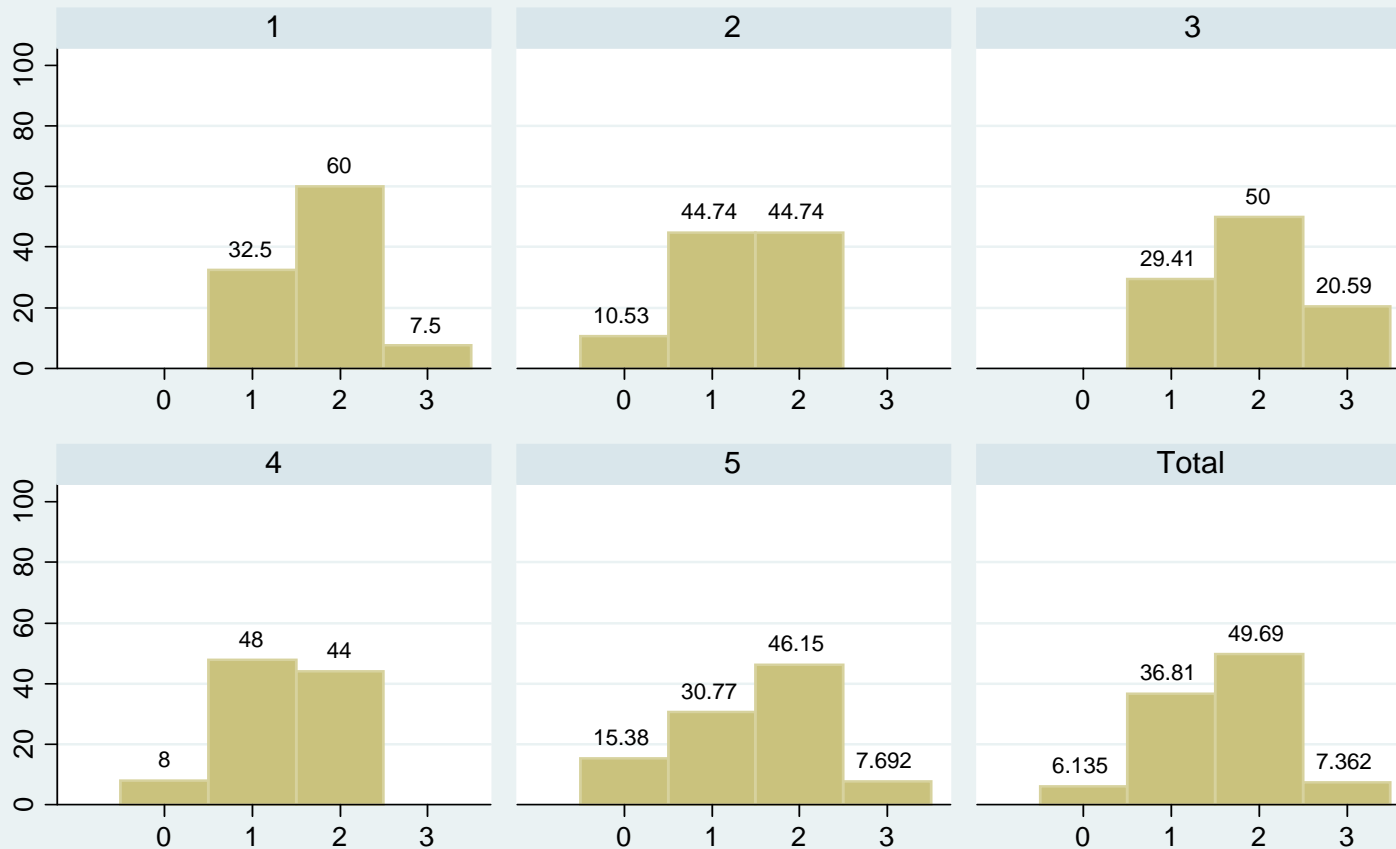


0=none  
1= some  
2=most  
3=all

# Area A by class



question a1



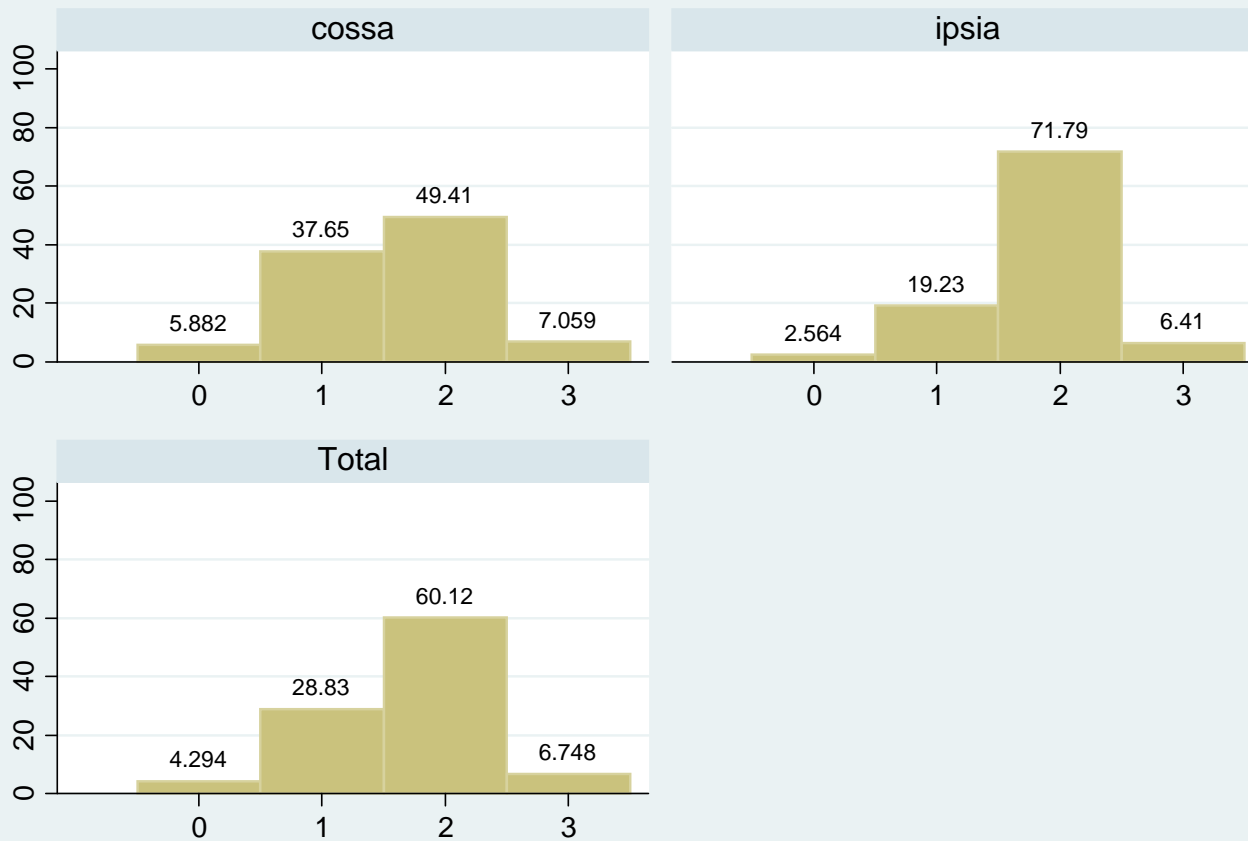
0=none  
1= some  
2=most  
3=all

**P=0.011**  
significant

# Area A by school



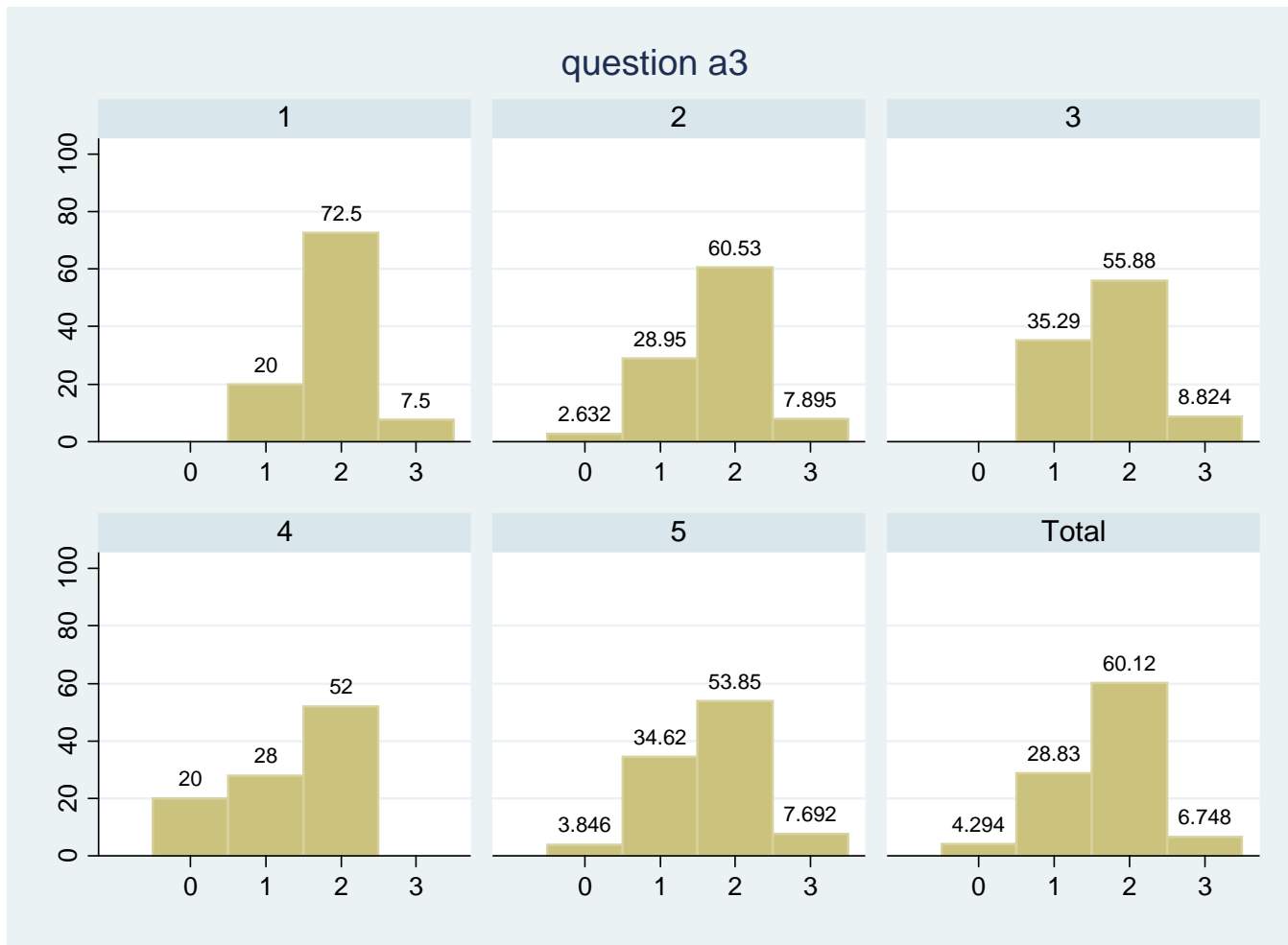
question a3



0=none  
1= some  
2=most  
3=all

I miei insegnanti sono: comprensivi, attenti

# Area A by class



0=none  
1= some  
2=most  
3=all

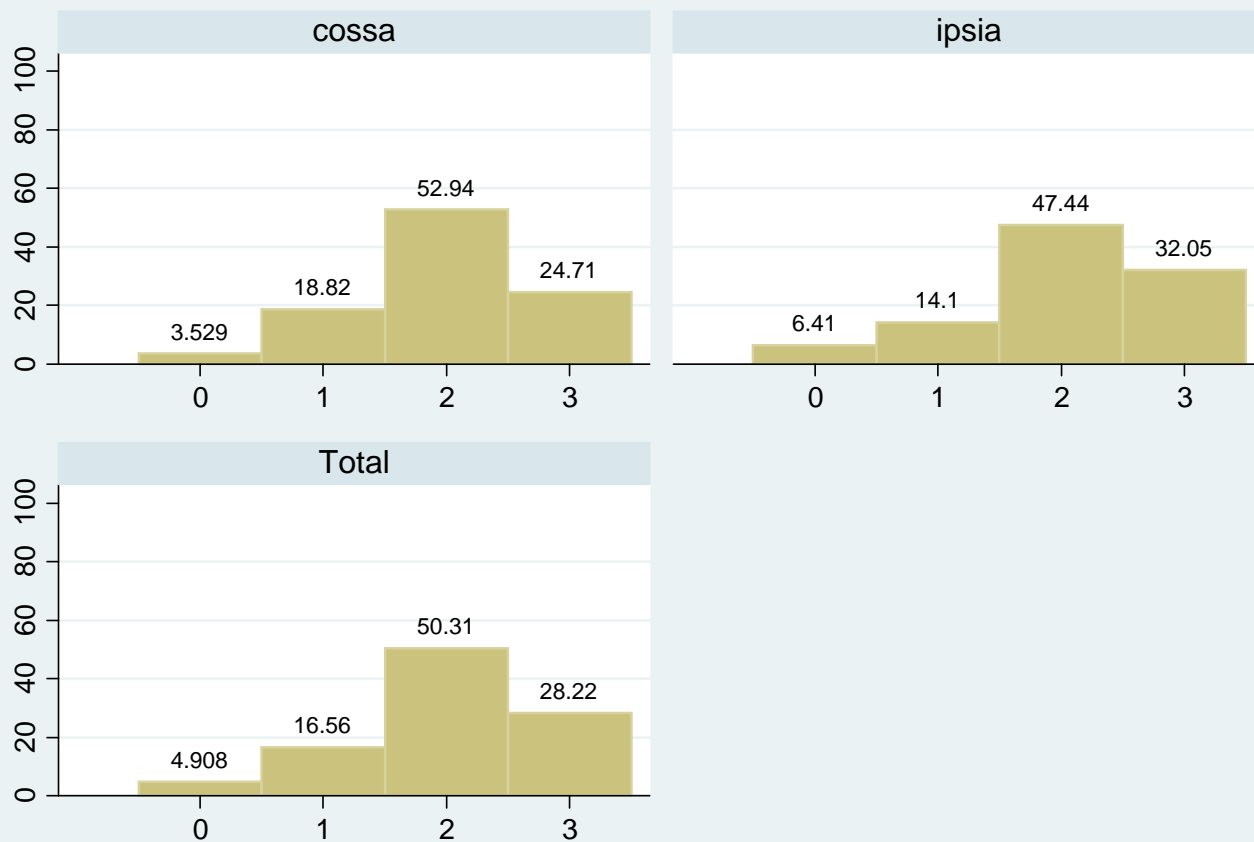
**P=0.025  
significant**

I miei insegnanti sono: comprensivi, attenti

# Area A by school



question a5



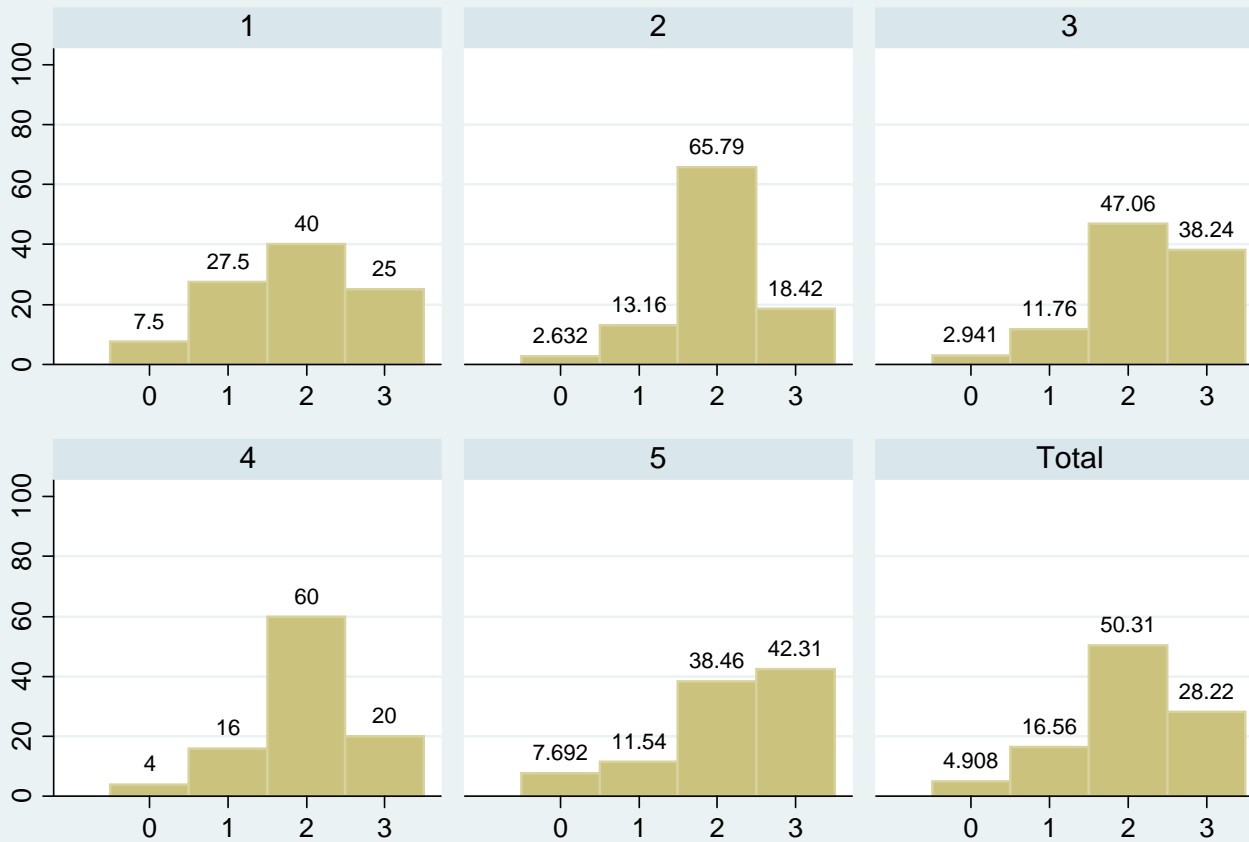
0=none  
1= some  
2=most  
3=all

I miei insegnanti sono: tolleranti alle critiche

# Area A by class



question a5



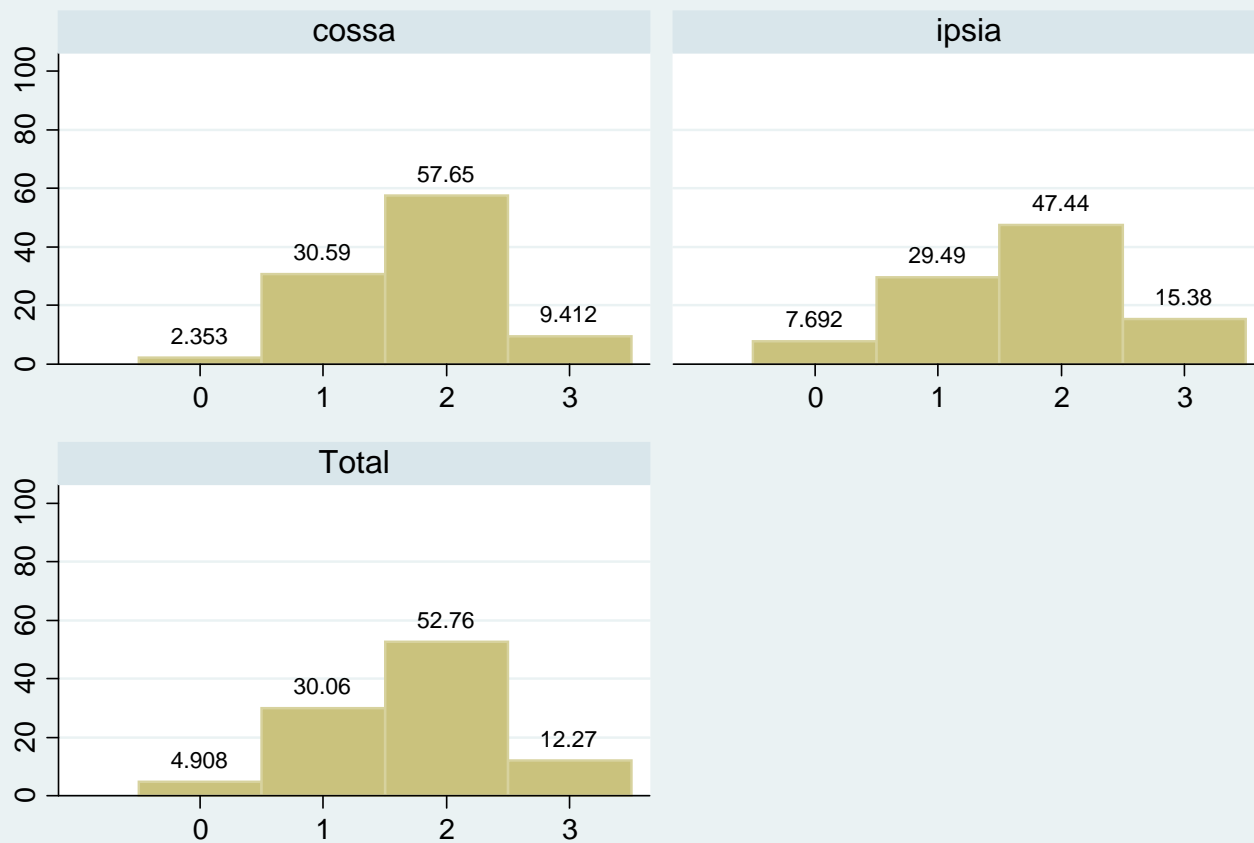
0=none  
1= some  
2=most  
3=all

I miei insegnanti sono: tolleranti alle critiche

# Area B by school



question b7



0=none  
1= some  
2=most  
3=all

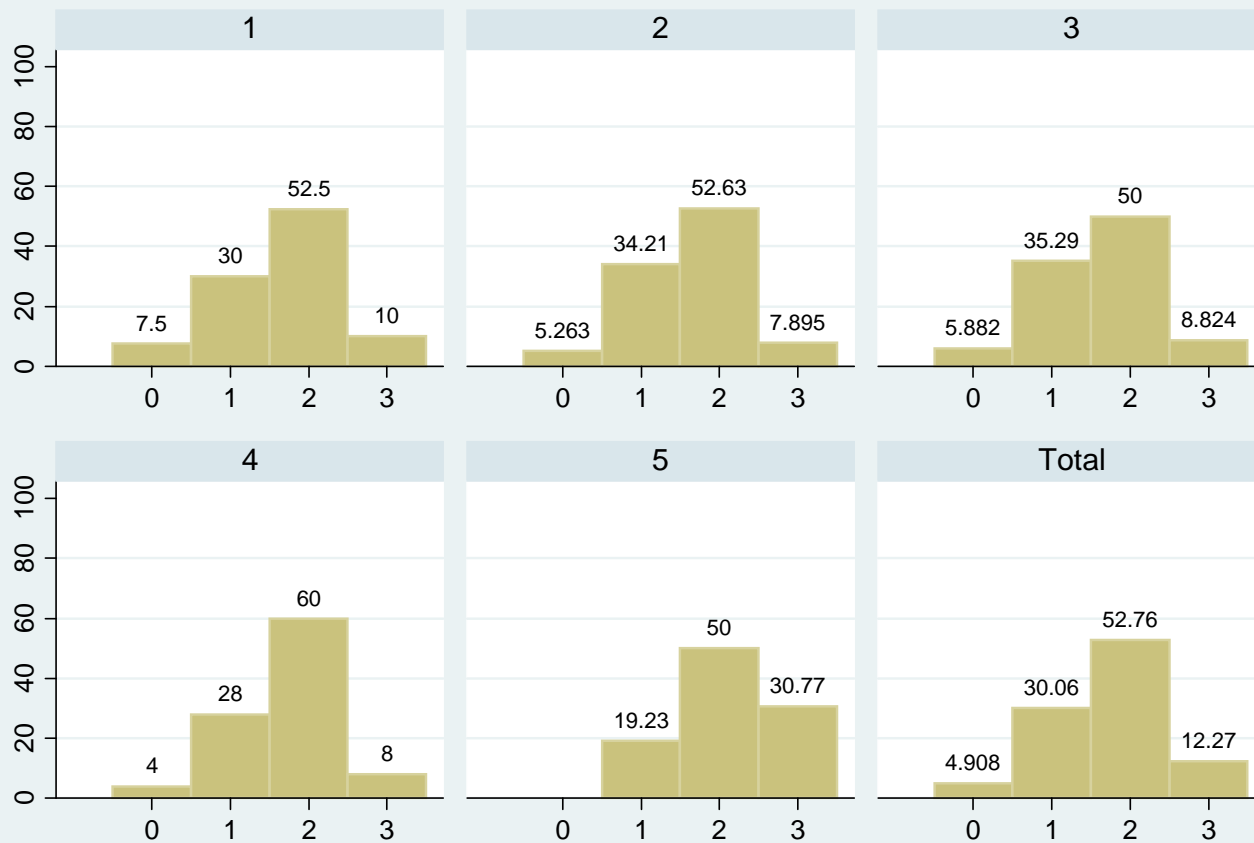
Non mi sono spesso chiari i requisiti di valutazione delle prove...



# Area B by class



question b7



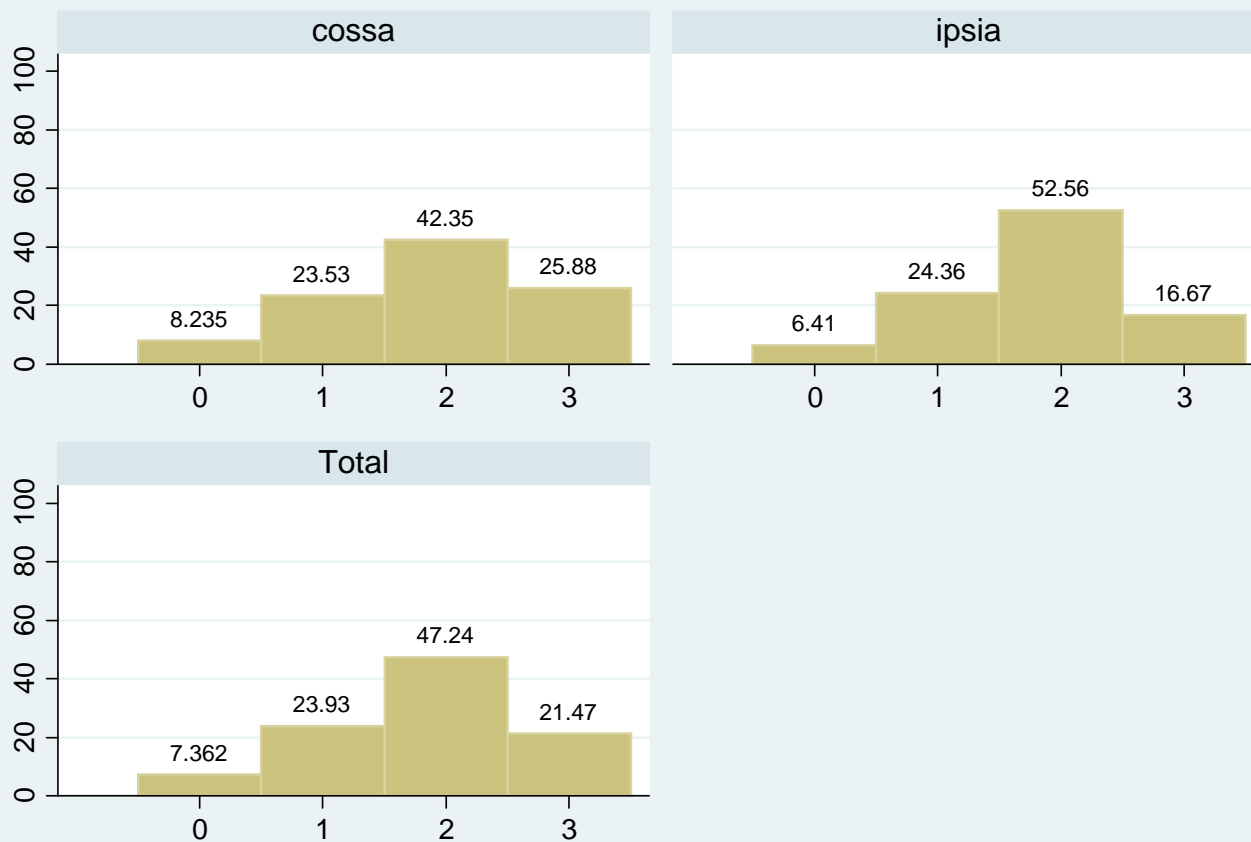
0=none  
1= some  
2=most  
3=all

Non mi sono spesso chiari i requisiti di valutazione delle prove...

# Area B by school



question b12



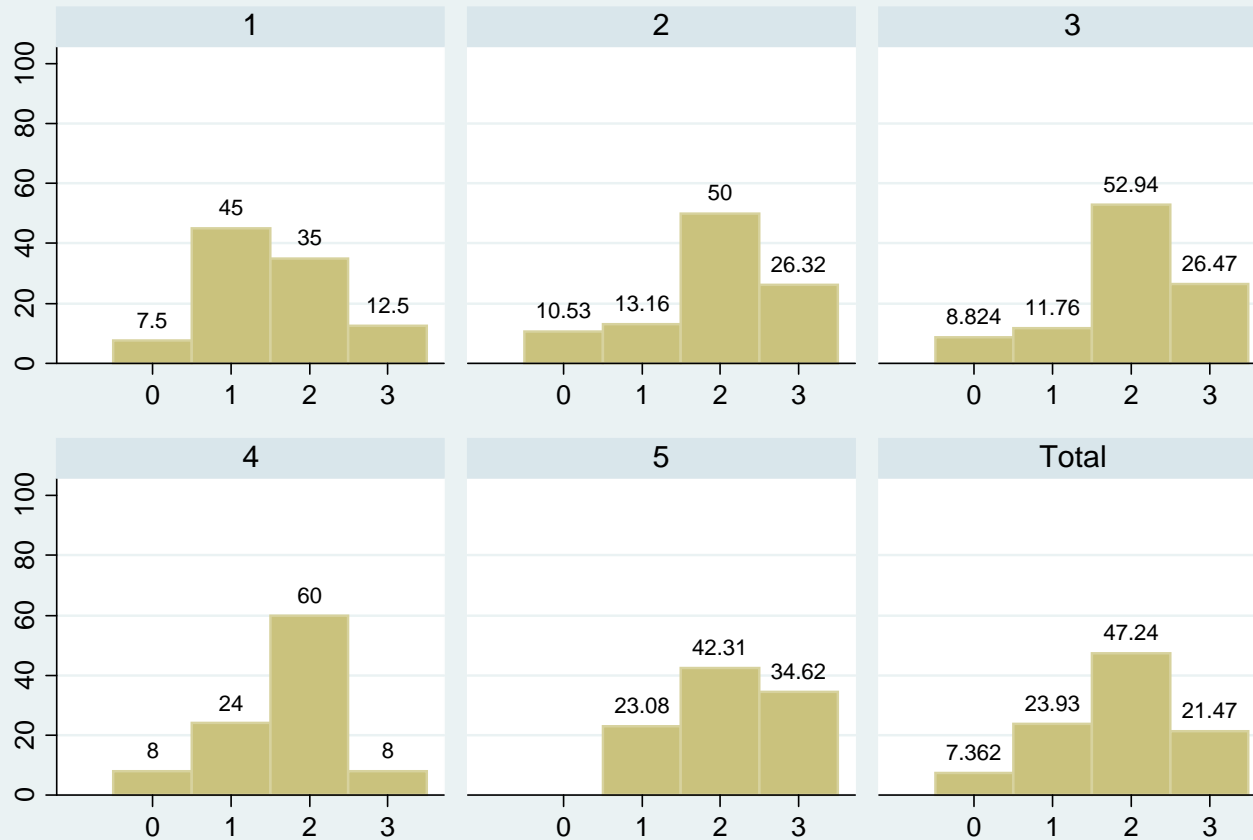
0=none  
1= some  
2=most  
3=all

Gli insegnanti non riescono a mantenere la pace e l'ordine necessari in classe

# Area B by class



question b12



0=none  
1= some  
2=most  
3=all

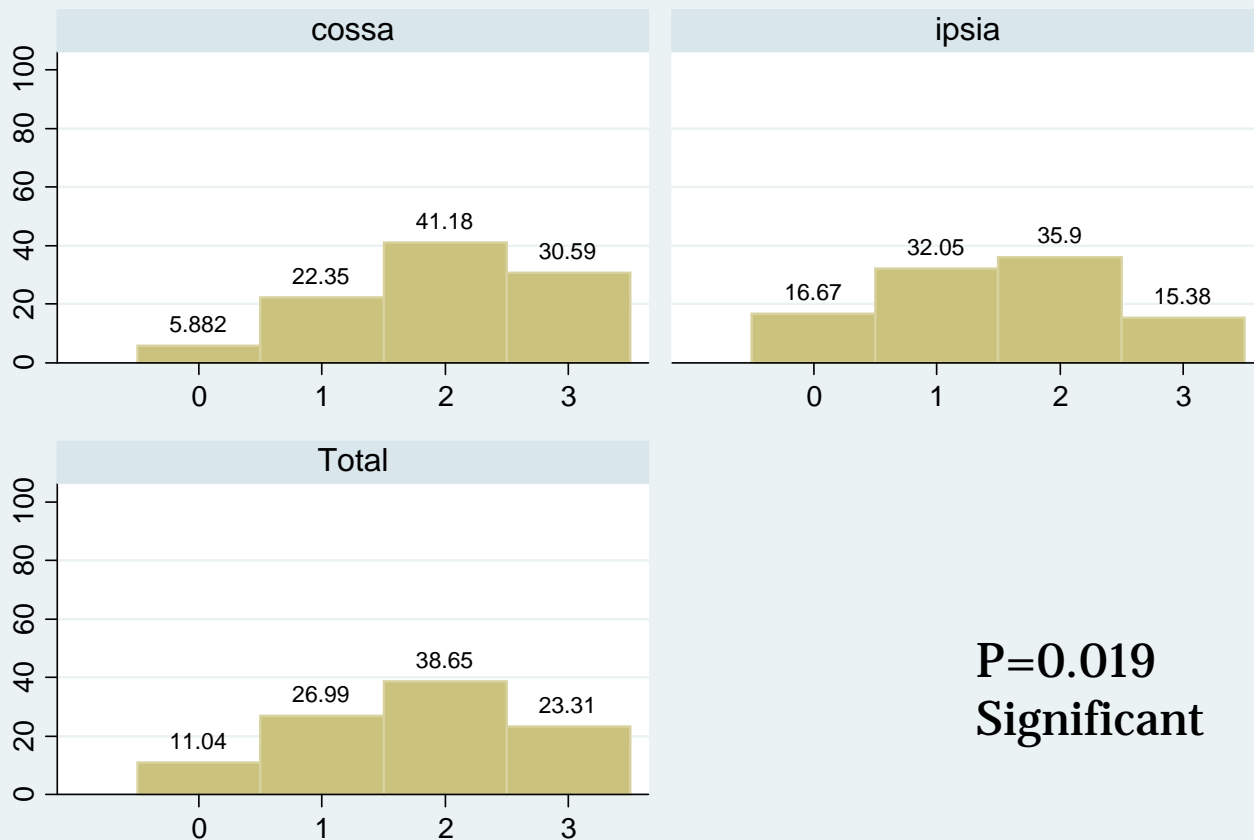
**P=0.028**  
**significant**

Gli insegnanti non riescono a mantenere la pace e l'ordine necessari in classe

# Area B by school



question b16



0=none  
1= some  
2=most  
3=all

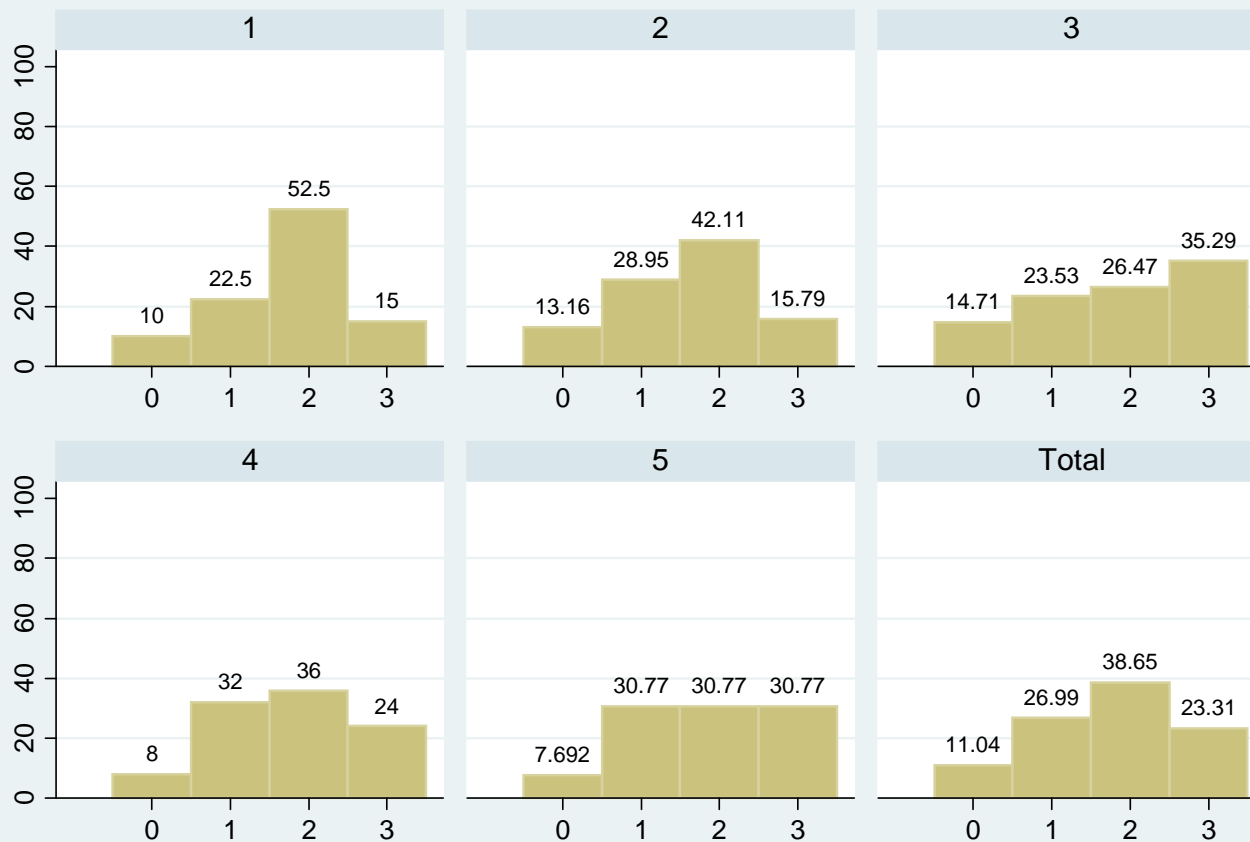
**P=0.019**  
**Significant**

Il prossimo anno voglio avere questi insegnanti

# Area B by class



question b16



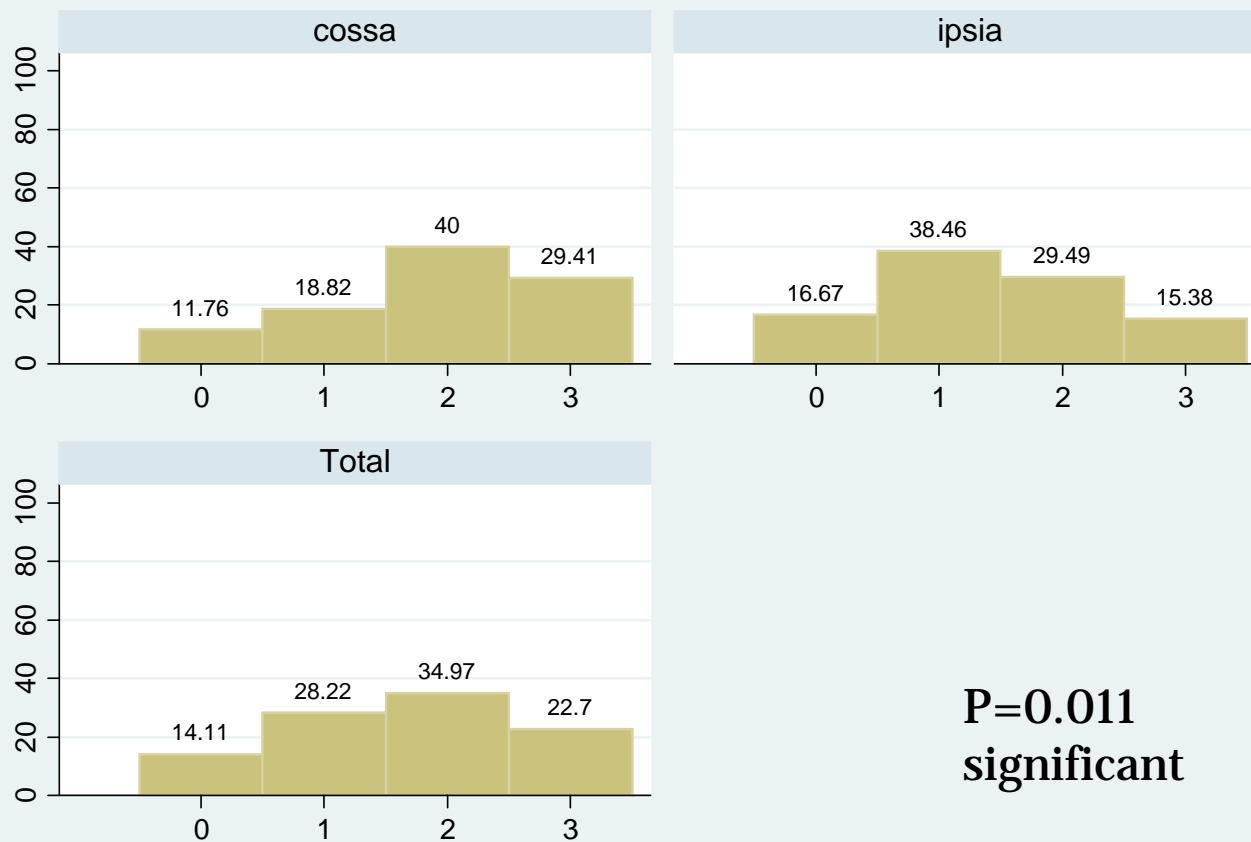
0=none  
1= some  
2=most  
3=all

Il prossimo anno voglio avere questi insegnanti

# Area C by school



question c18



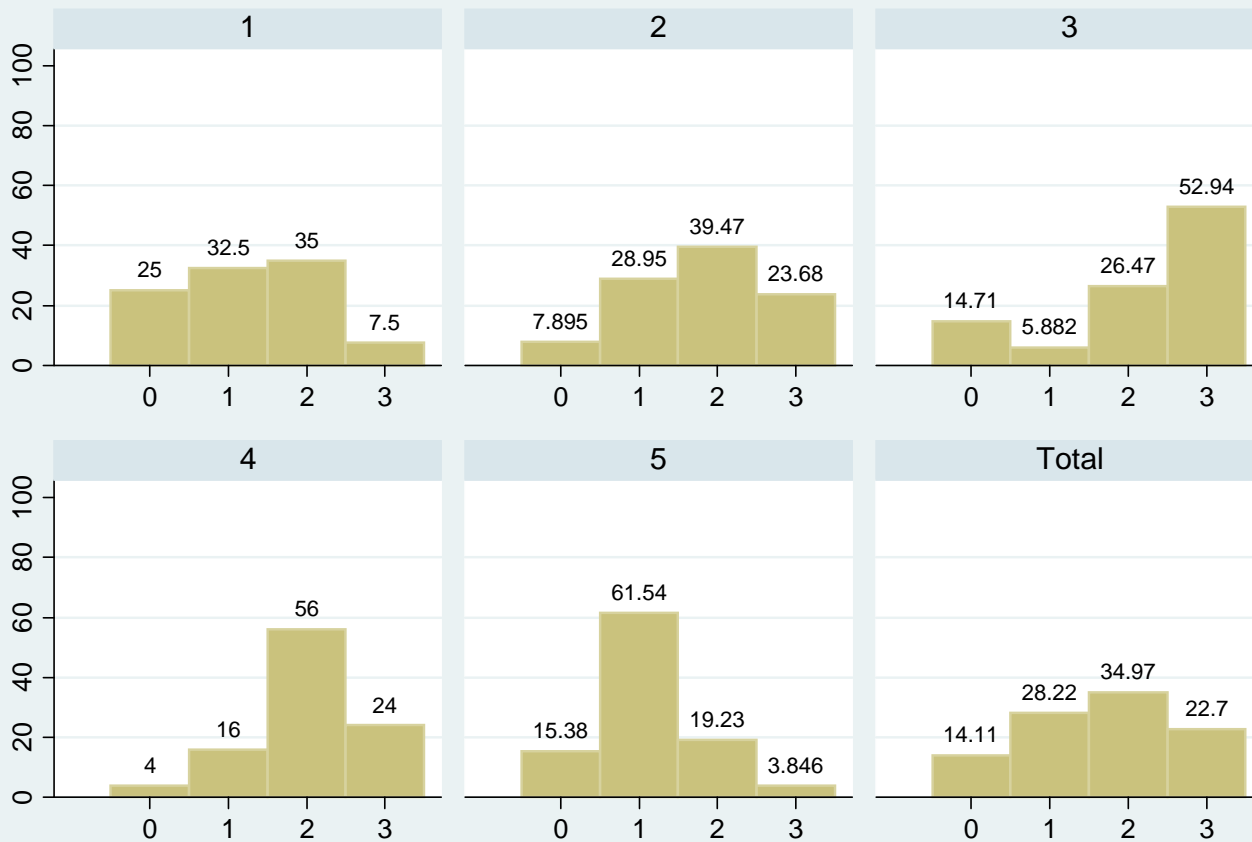
0=none  
1= some  
2=most  
3=all

**P=0.011**  
**significant**

# Area C by class



question c18



0=none  
1= some  
2=most  
3=all

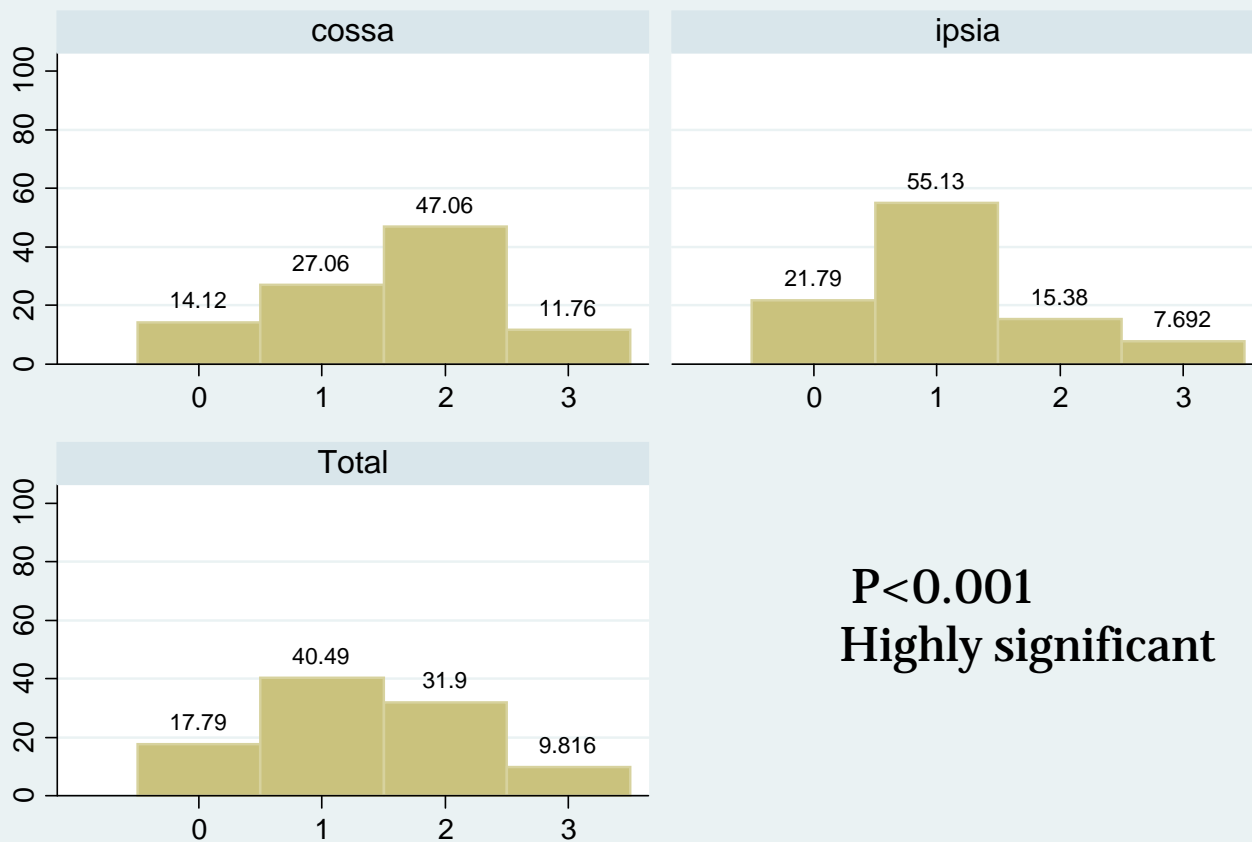
**P<0.001**  
**Highly significant**

I miei compagni stanno cercando di formare una buona squadra

# Area C by school



question c23



0=none  
1= some  
2=most  
3=all

**$P < 0.001$**   
**Highly significant**

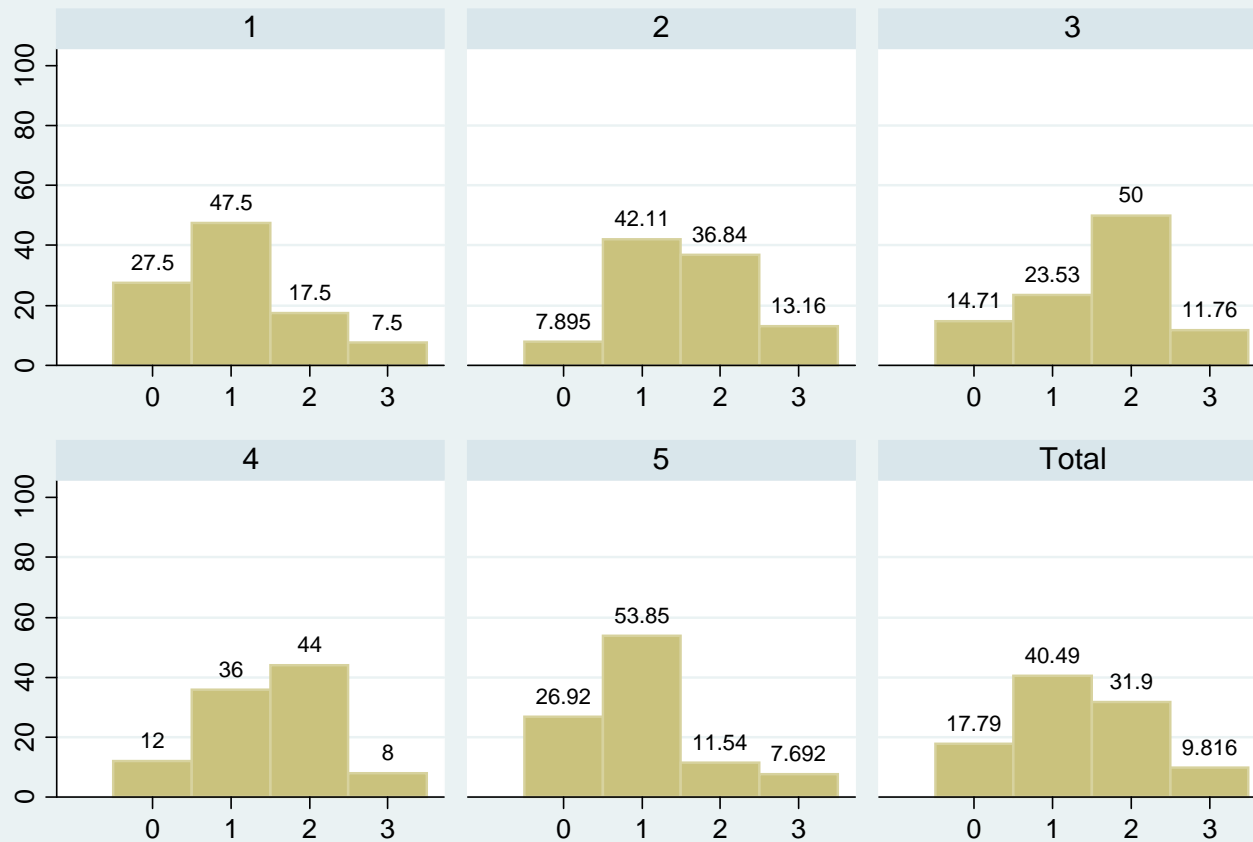
Quanto sei soddisfatto della tua scuola?



# Area C by class



question c23



0=none  
1= some  
2=most  
3=all

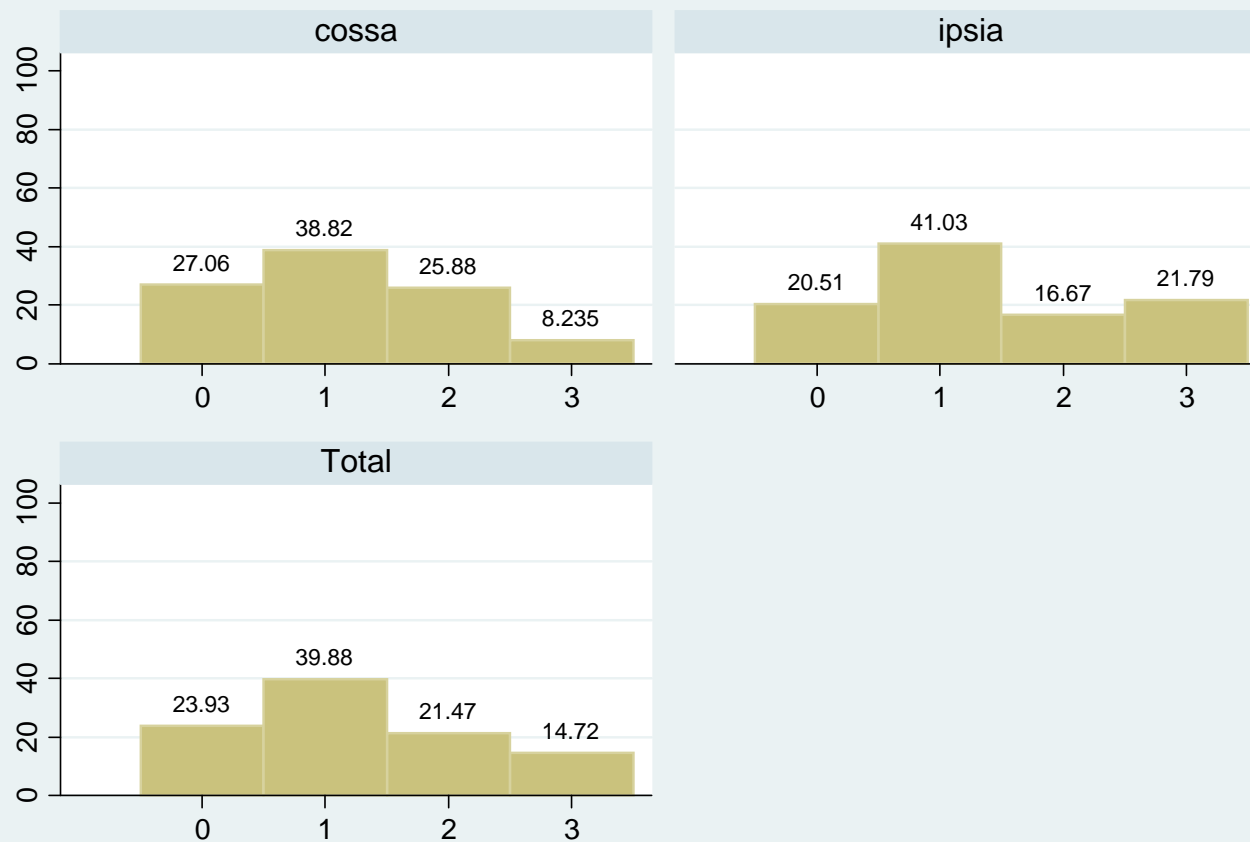
**P=0.036**  
significant

Quanto sei soddisfatto della tua scuola?

# Area D by school

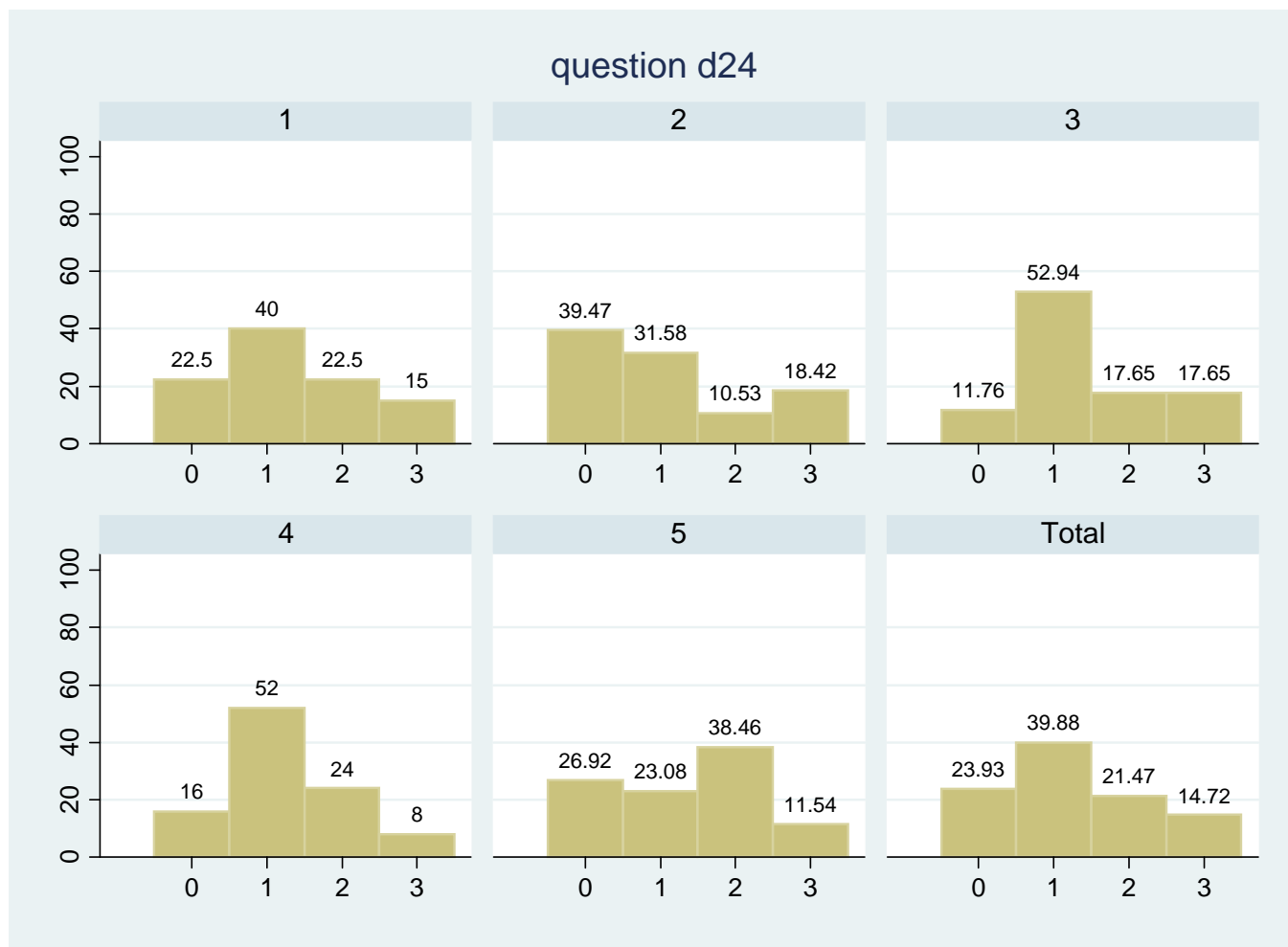


question d24



0=false  
1= rather false  
2=rather correct  
3=correct

# Area D by class

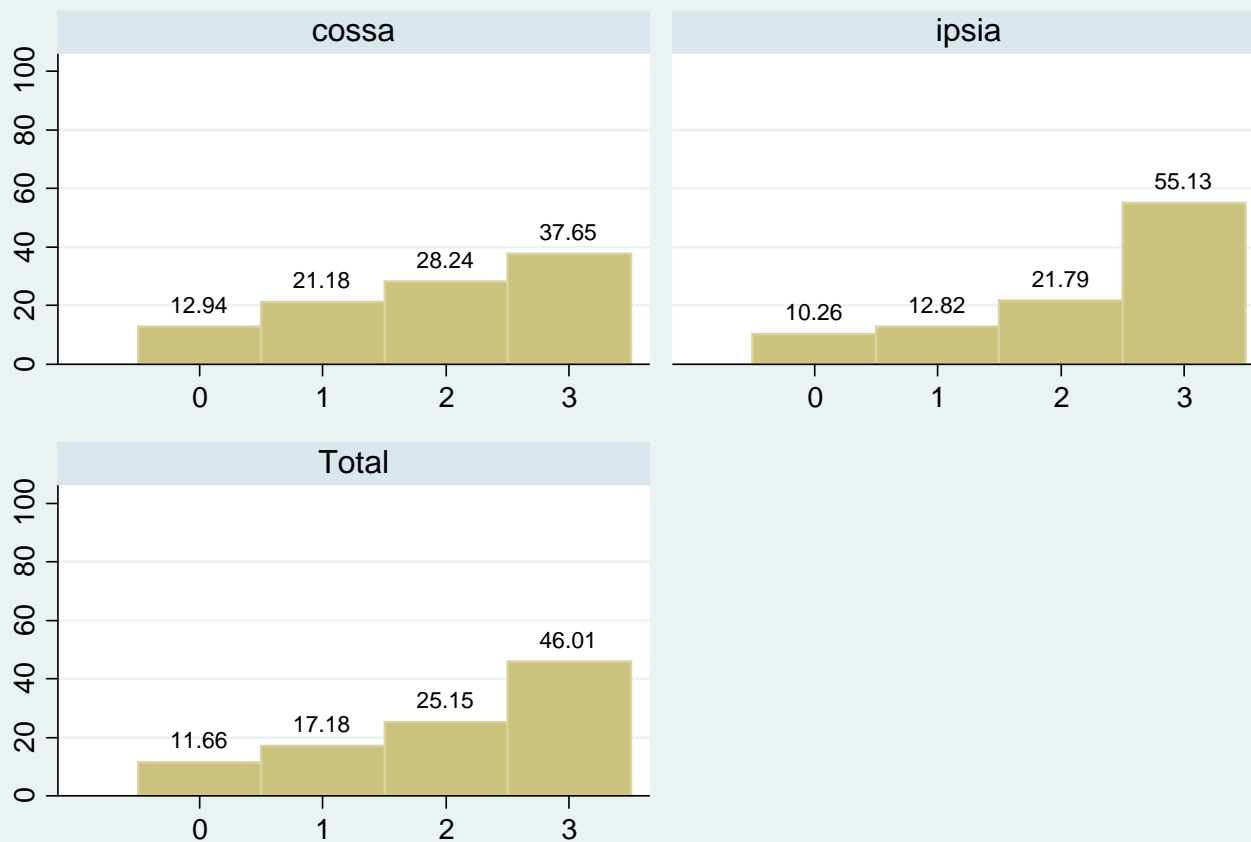


0=false  
1= rather false  
2=rather correct  
3=correct

# Area D by school



question d25



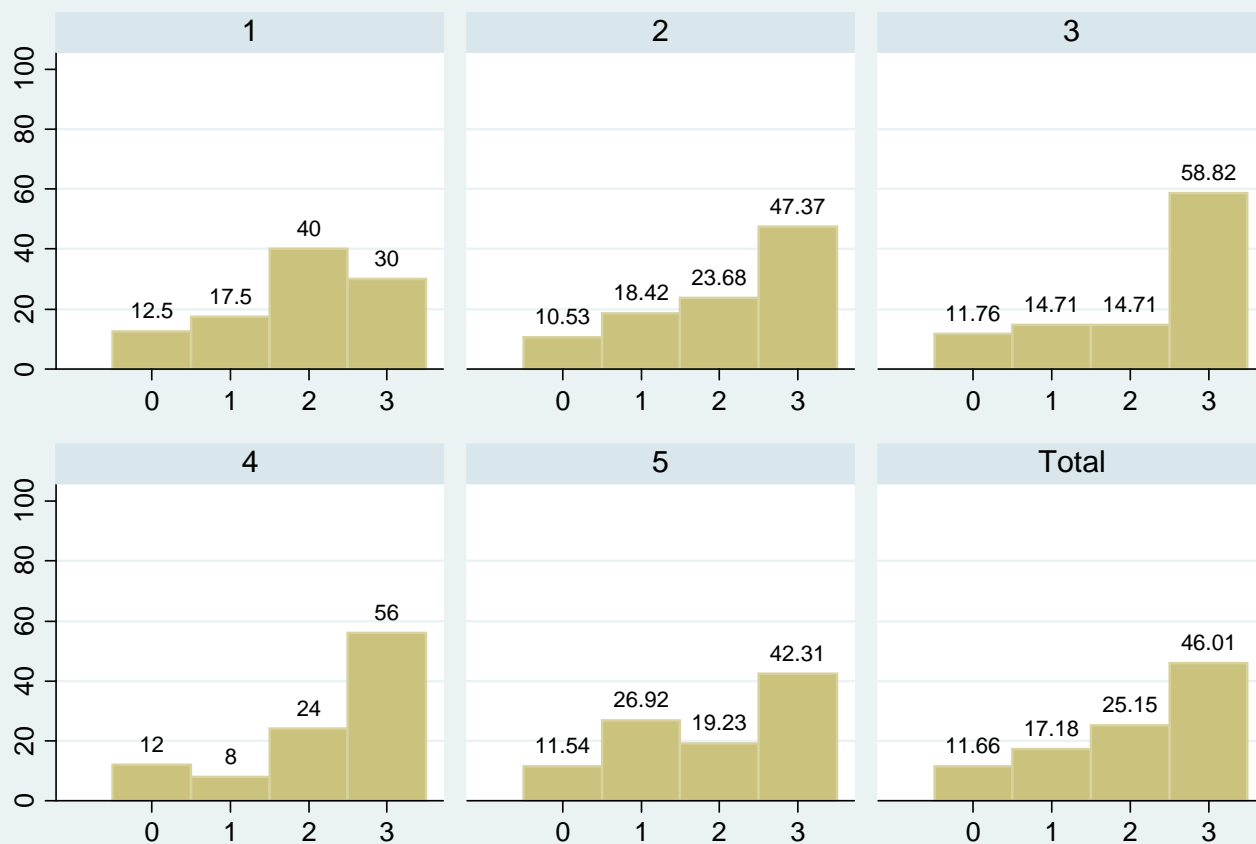
0=false  
1= rather false  
2=rather correct  
3=correct

Nella nostra scuola ci sono sempre attività a cui i genitori...

# Area D by class



question d25



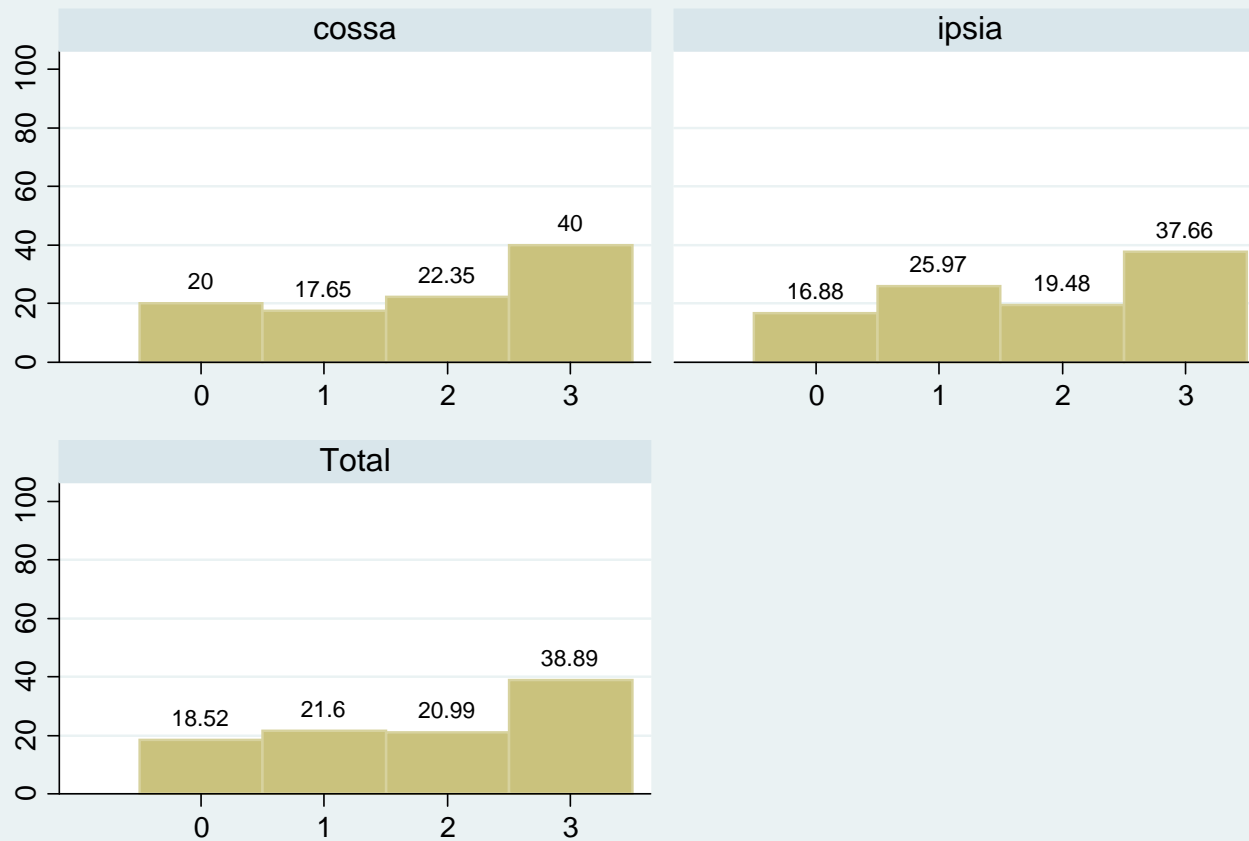
0=false  
1= rather false  
2=rather correct  
3=correct

Nella nostra scuola ci sono sempre attività a cui i genitori...

# Area D by school



question d28

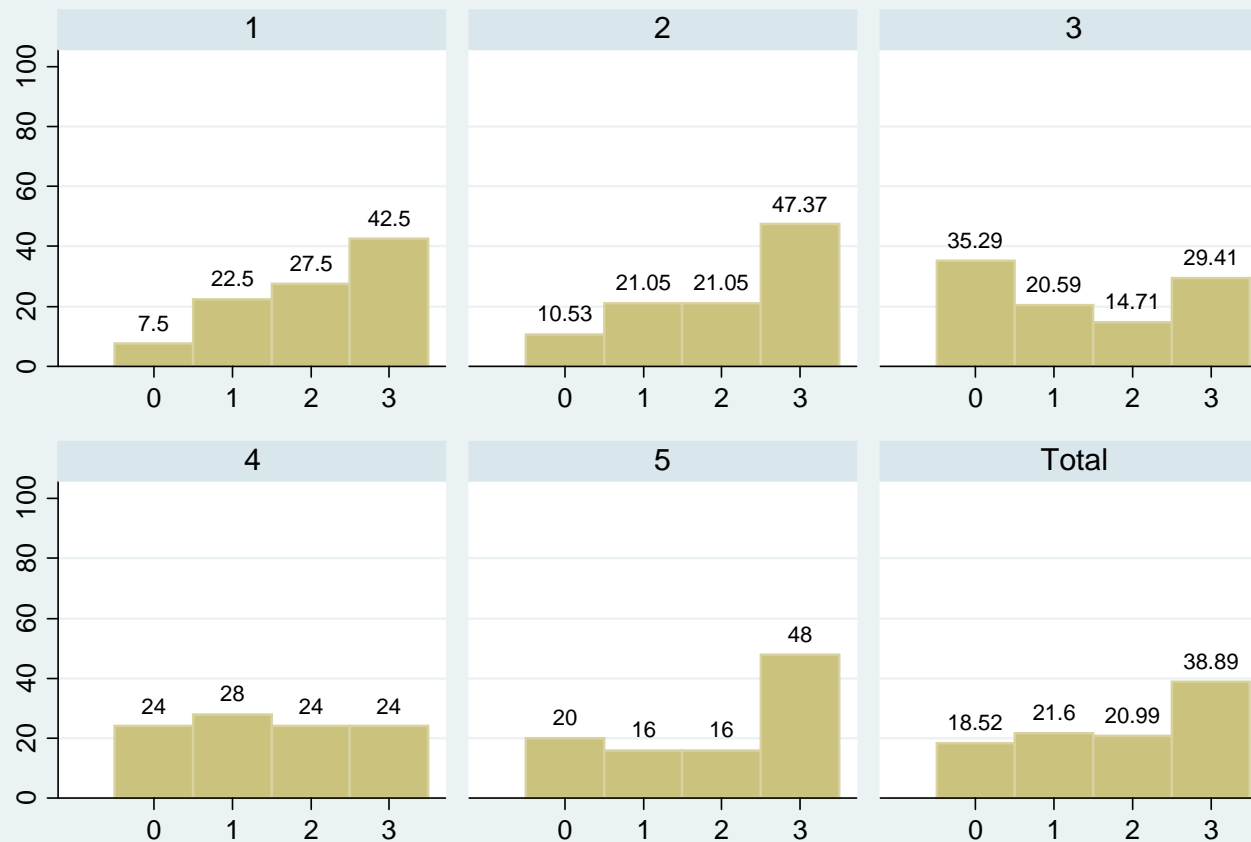


0=false  
1= rather false  
2=rather correct  
3=correct

# Area D by class



question d28



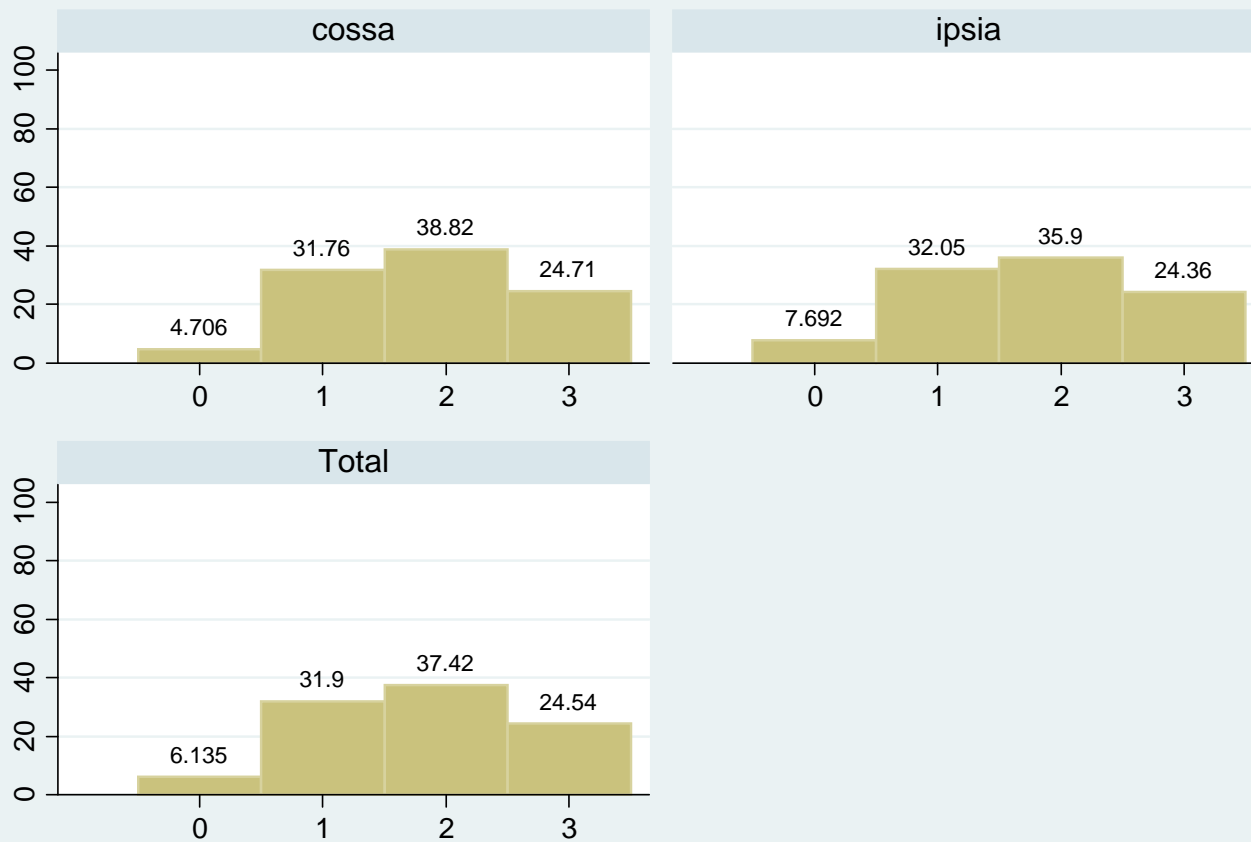
0=false  
1= rather false  
2=rather correct  
3=correct

Mi piacerebbe poter andare in un'altra scuola

# Area D by school



question d30



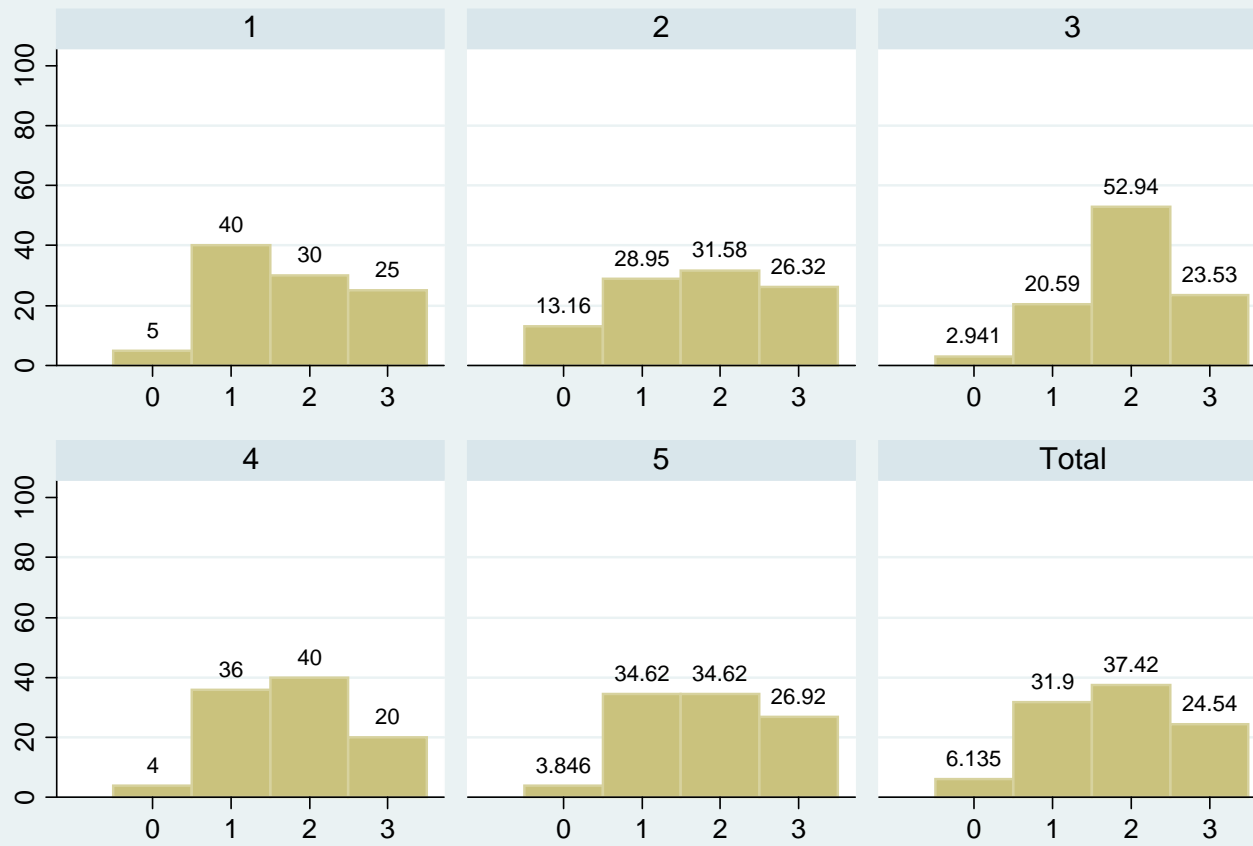
0=false  
1= rather false  
2=rather correct  
3=correct



# Area D by class



question d30



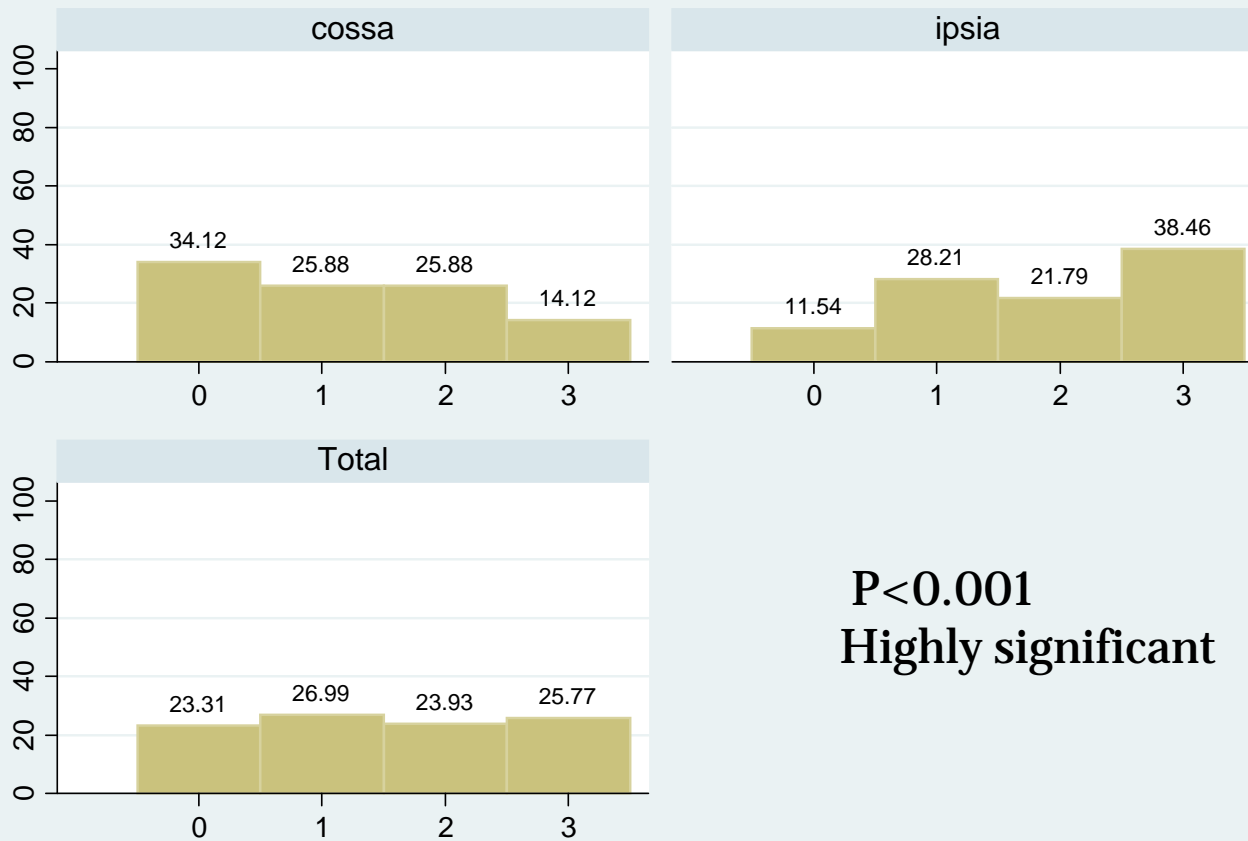
0=false  
1= rather false  
2=rather correct  
3=correct

Gli studenti sono valutati in modo trasparente ed equo

# Area D by school



question d32



0=false  
1= rather false  
2=rather correct  
3=correct

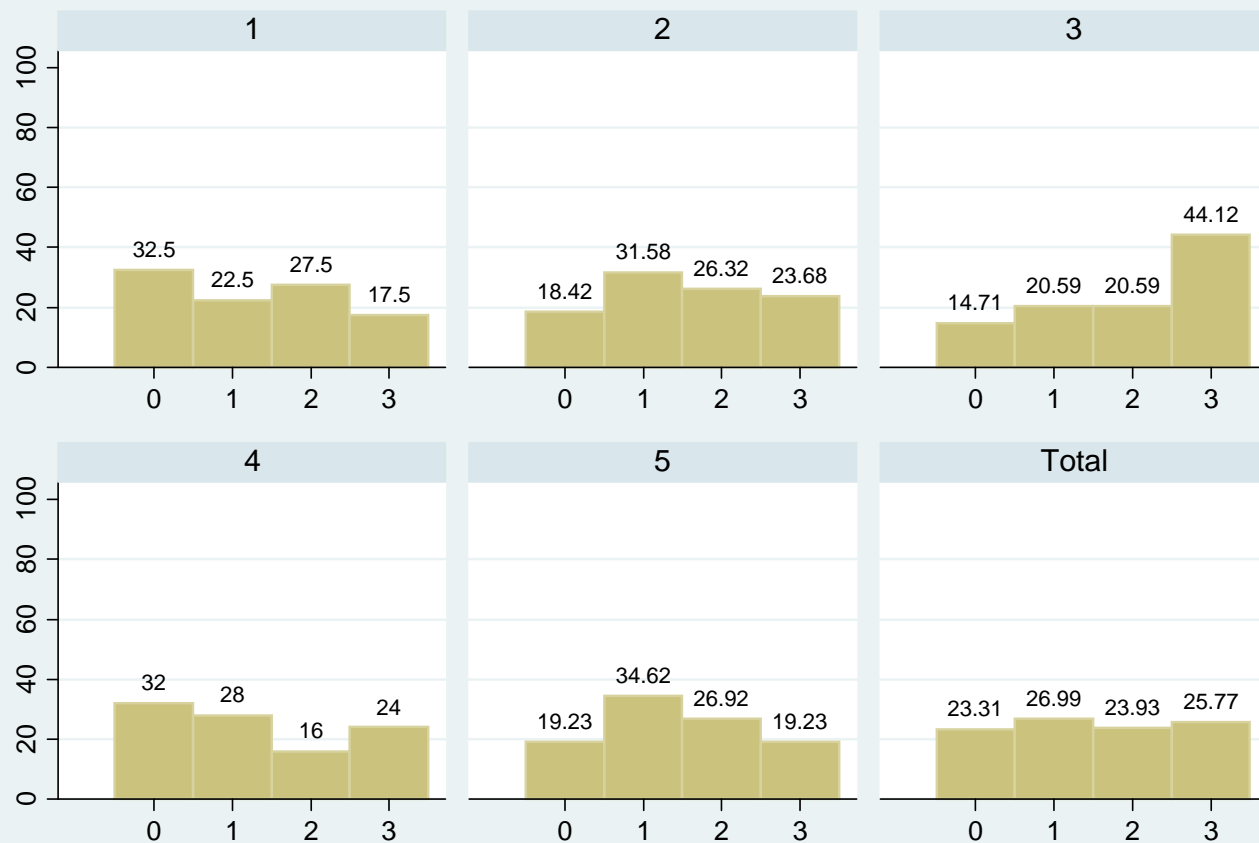
**P<0.001**  
**Highly significant**

Per gli studenti con scarsi risultati ci sono percorsi di supporto individualizzato

# Area D by class



question d32



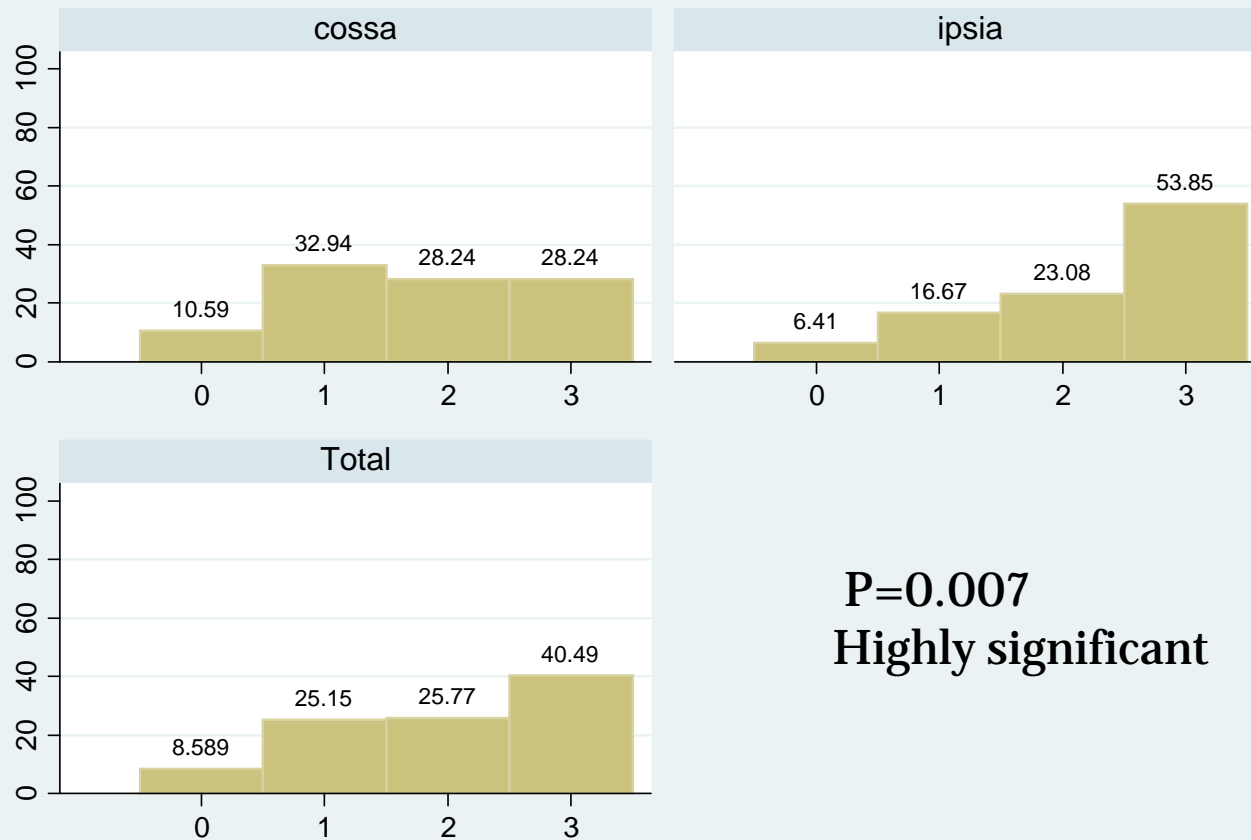
0=false  
1= rather false  
2=rather correct  
3=correct

Per gli studenti con scarsi risultati ci sono percorsi di supporto individualizzato

# Area D by school



question d34



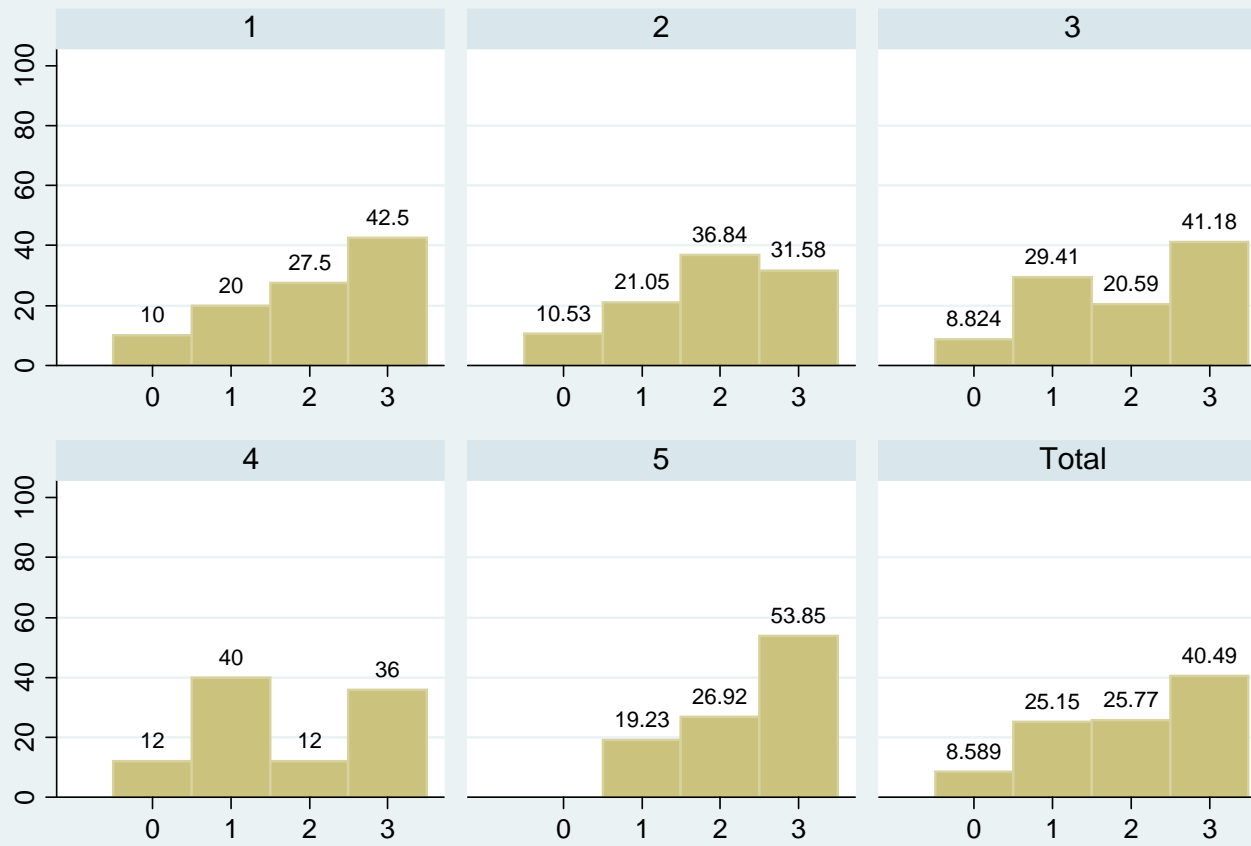
0=false  
1= rather false  
2=rather correct  
3=correct

**P=0.007**  
**Highly significant**

# Area D by class



question d34

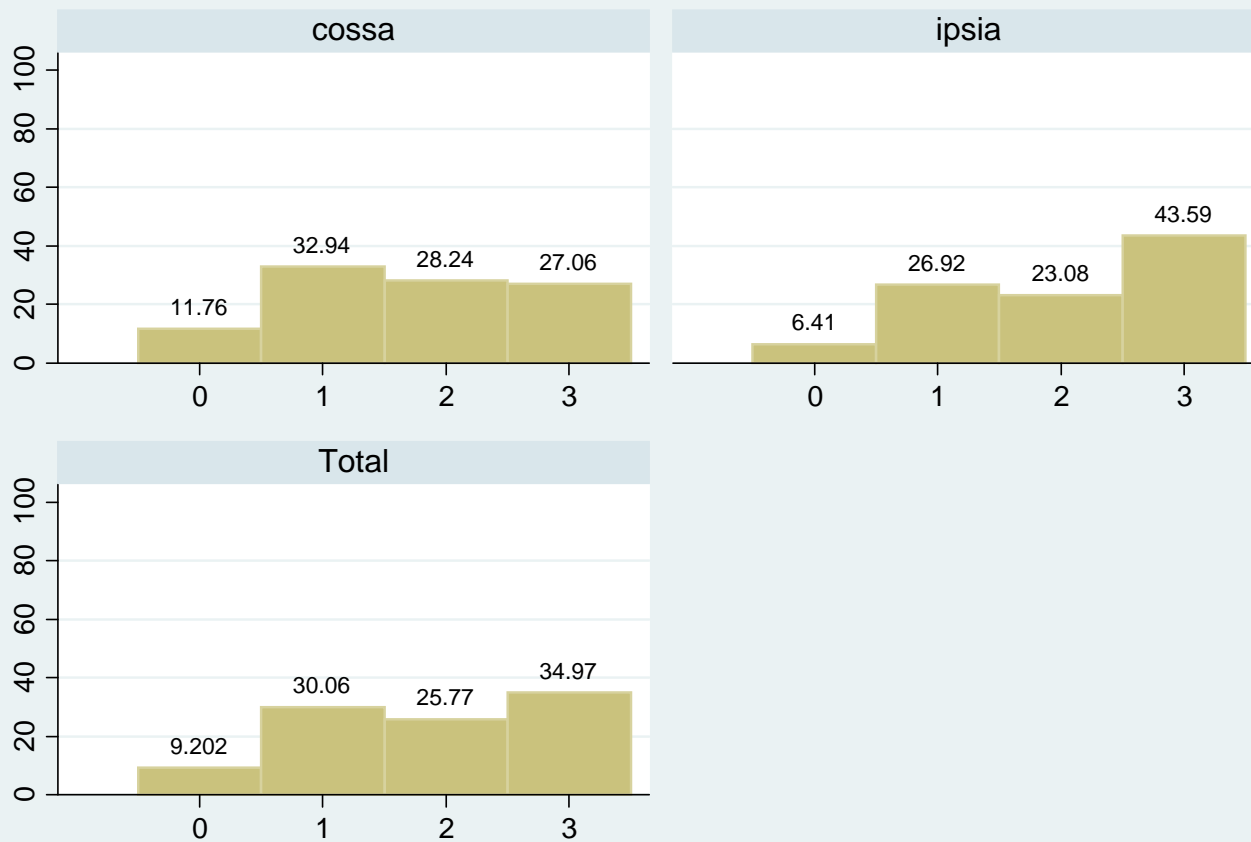


0=false  
1= rather false  
2=rather correct  
3=correct

# Area D by school



question d35



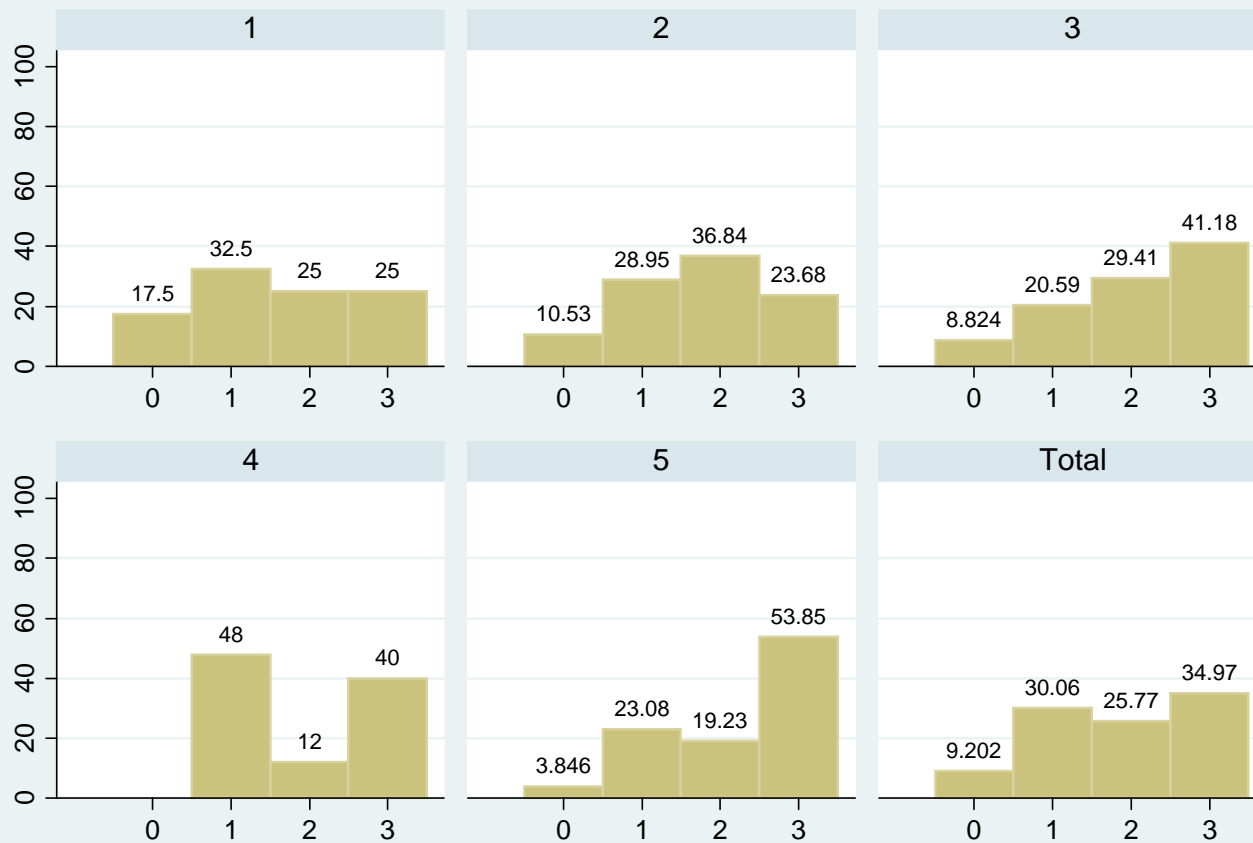
0=false  
1= rather false  
2=rather correct  
3=correct

Abbiamo beneficiato del supporto di un orientatore...

# Area D by class



question d35



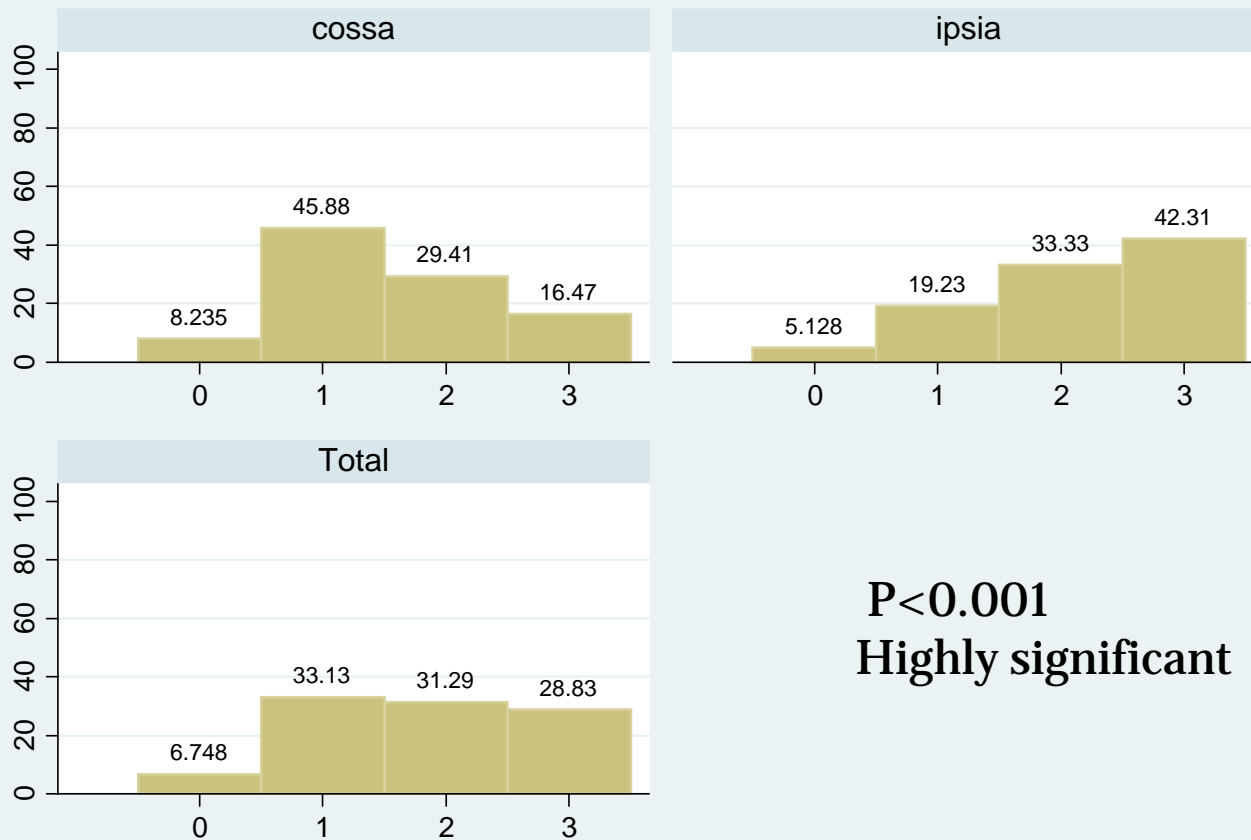
0=false  
1= rather false  
2=rather correct  
3=correct

Abbiamo beneficiato del supporto di un orientatore...

# Area D by school



question d36



0=false  
1= rather false  
2=rather correct  
3=correct

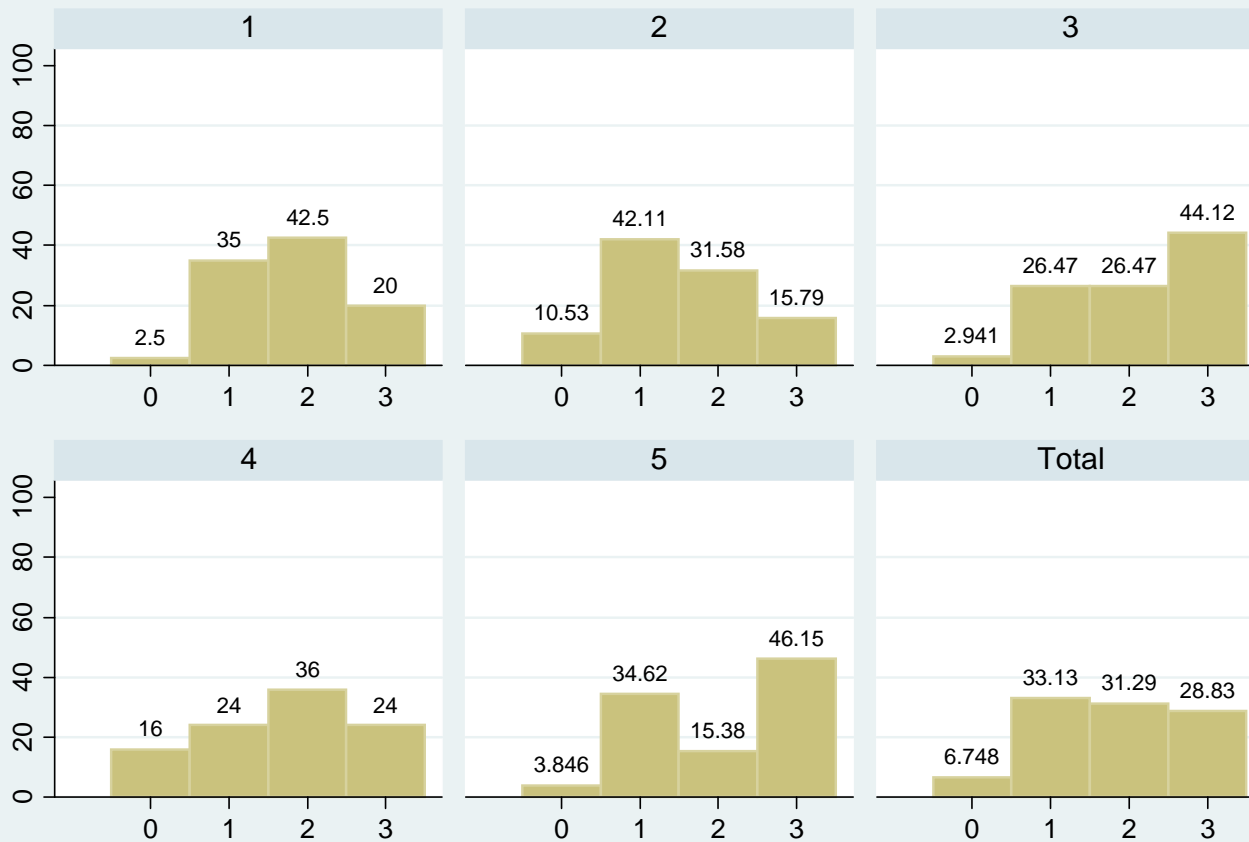
**$P < 0.001$**   
**Highly significant**



# Area D by class



question d36



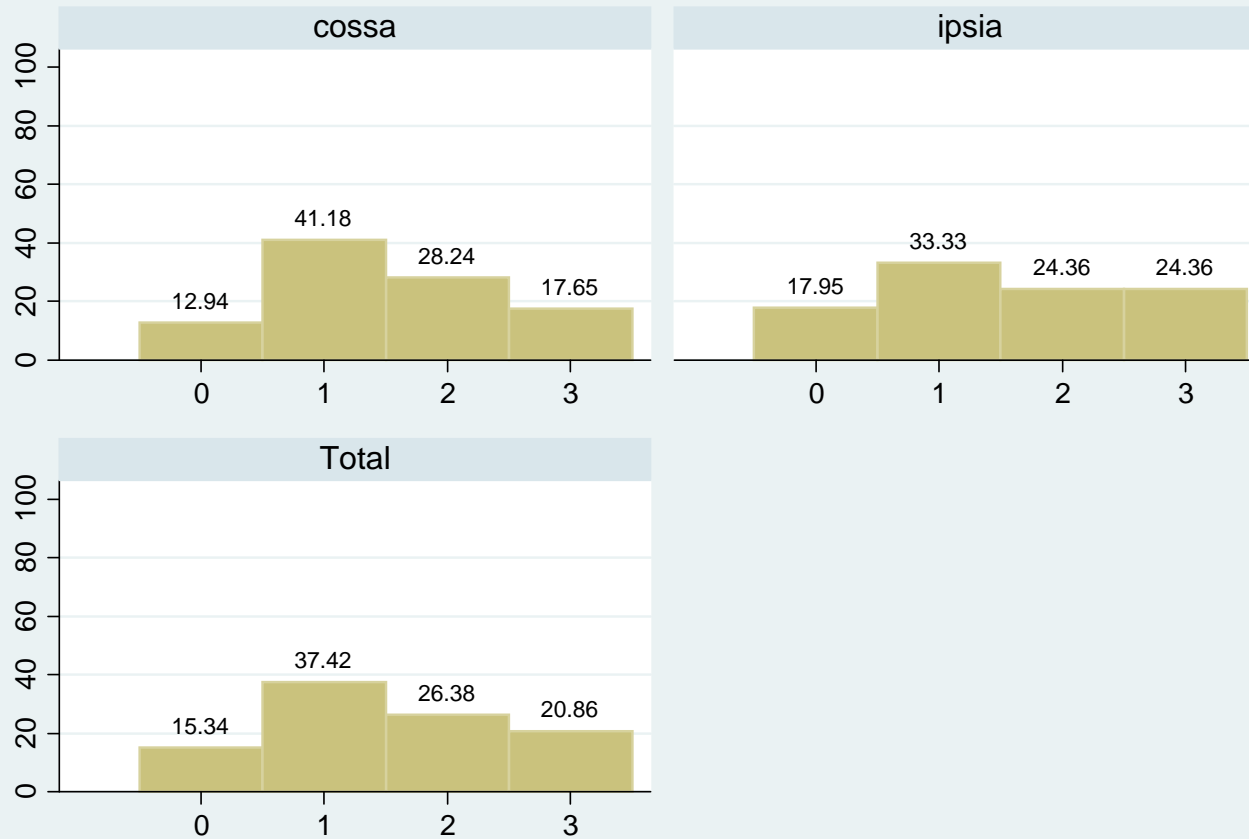
0=false  
1= rather false  
2=rather correct  
3=correct

**P=0.046**  
**Borderline**

# Area D by school



question d38

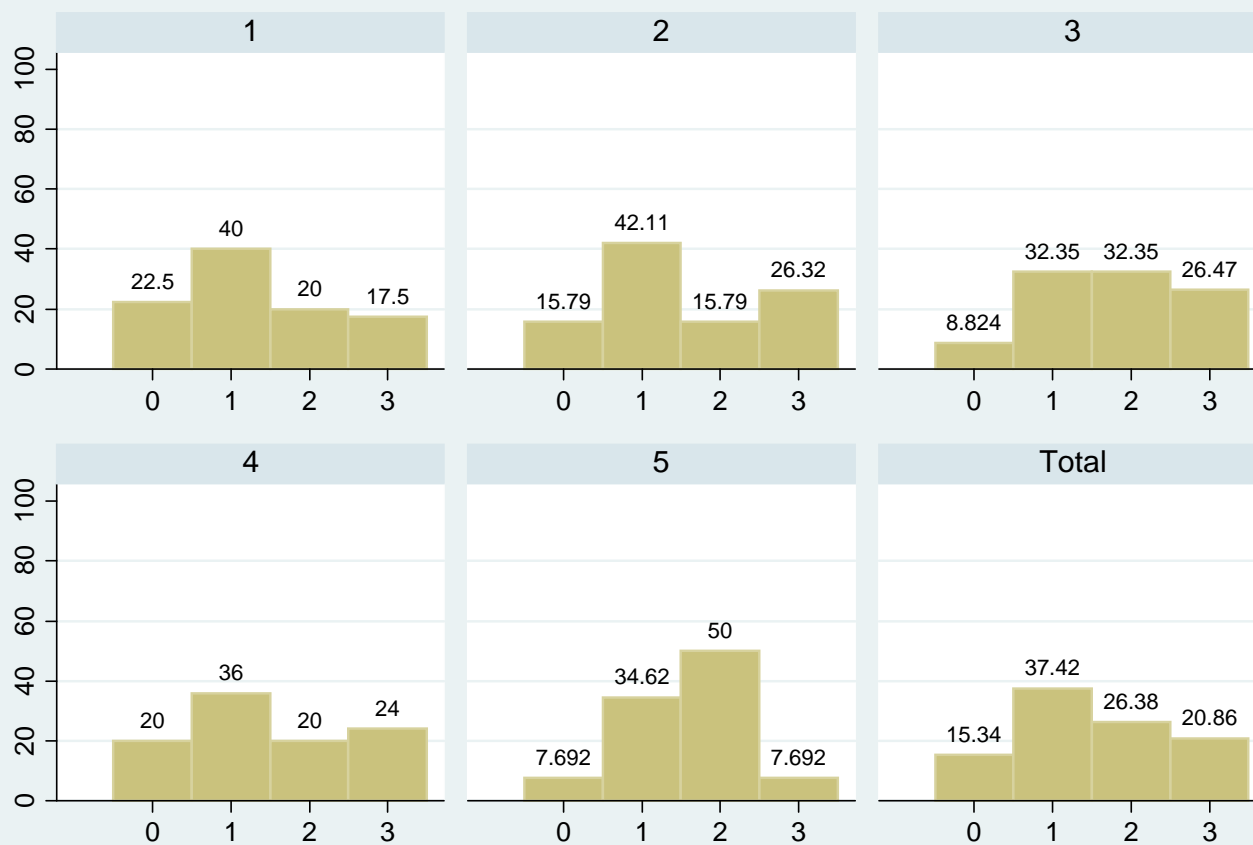


0=false  
1= rather false  
2=rather correct  
3=correct

# Area D by class

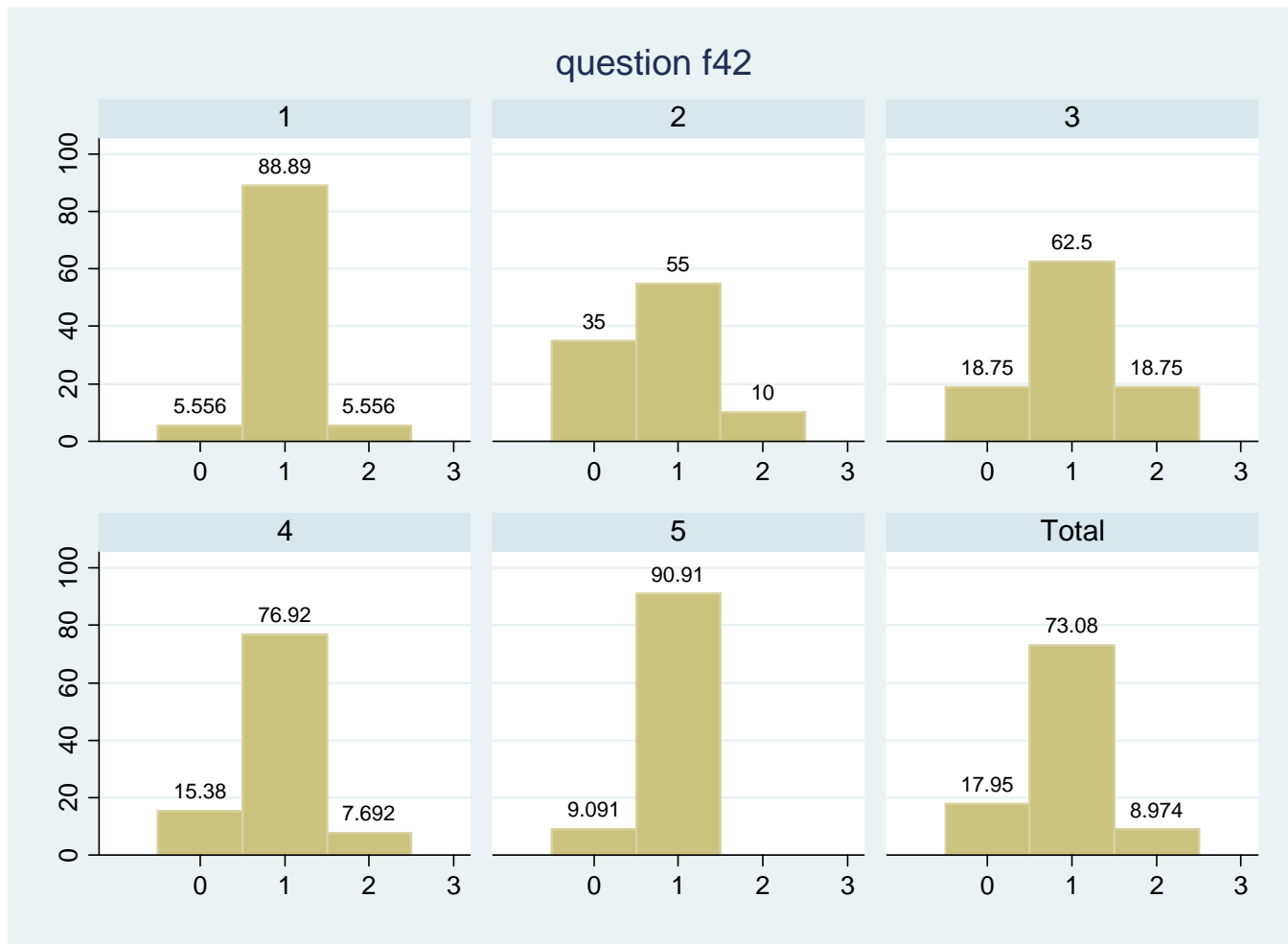


question d38



0=false  
1= rather false  
2=rather correct  
3=correct

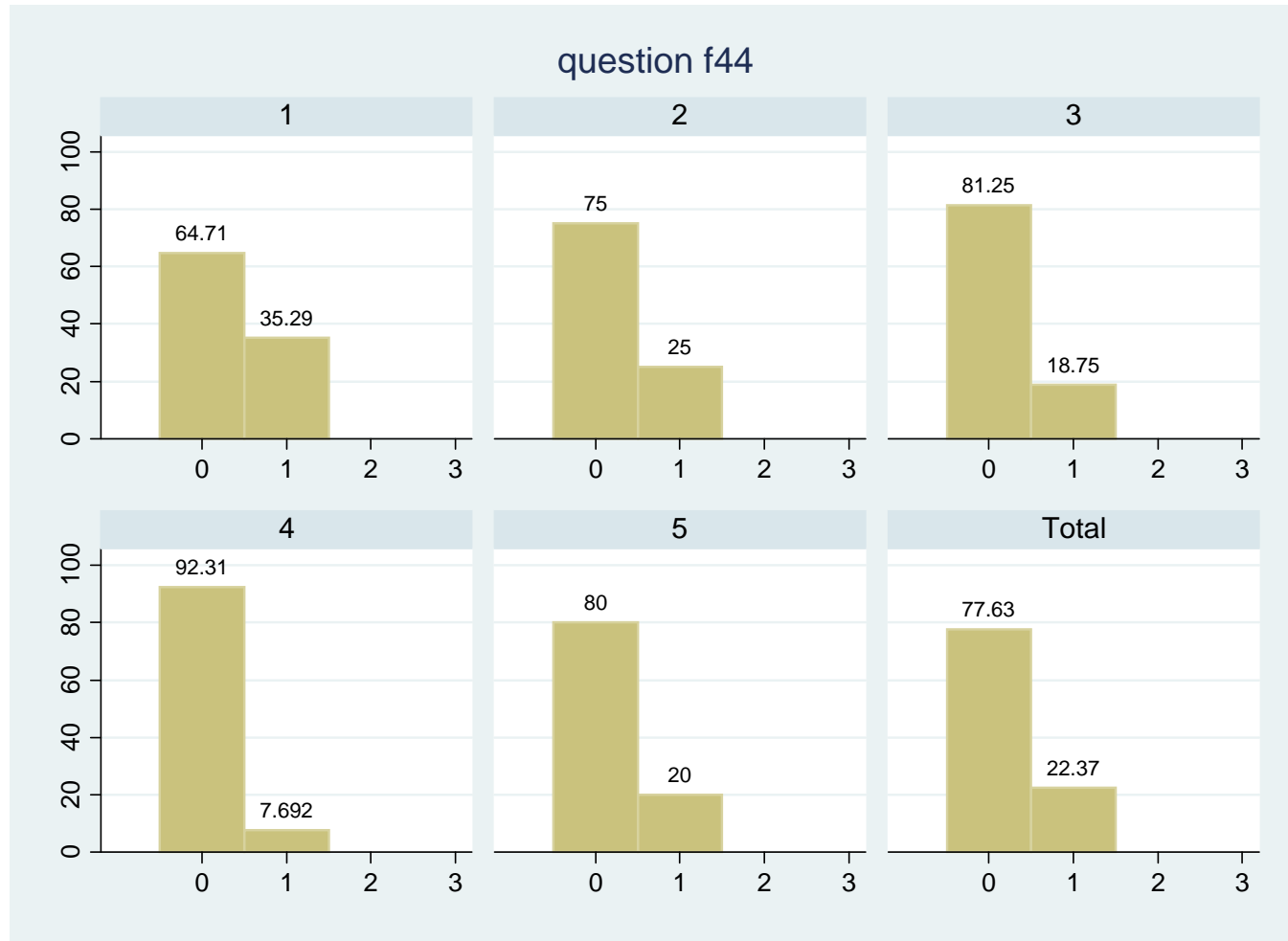
# Conclusive remarks about new questionnaire



0=poco chiaro  
1=chiaro  
2=molto chiaro

Le domande erano formulate in modo:

# Conclusive remarks about new questionnaire



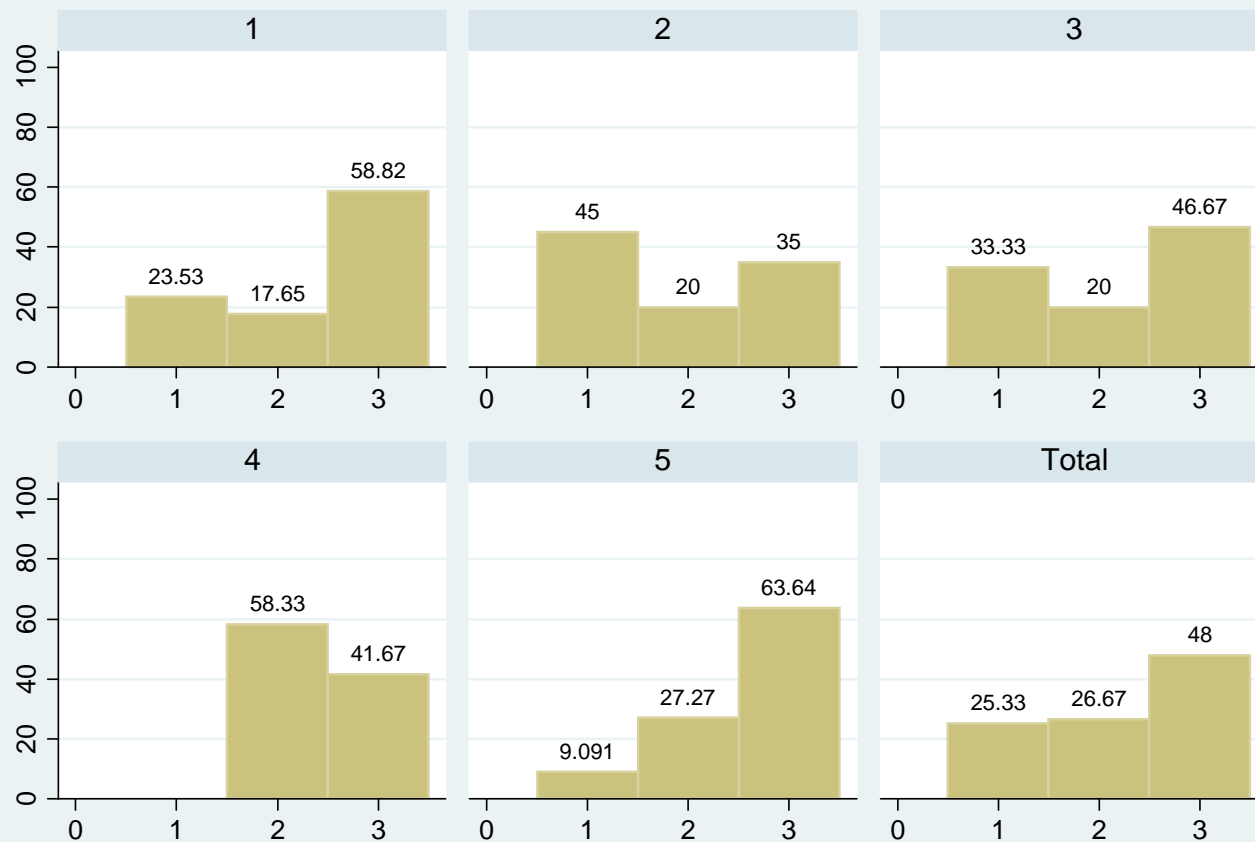
0=no  
1=sì

Le domande sono oltre il mio livello di conoscenza

# Conclusive remarks about new questionnaire



question f45



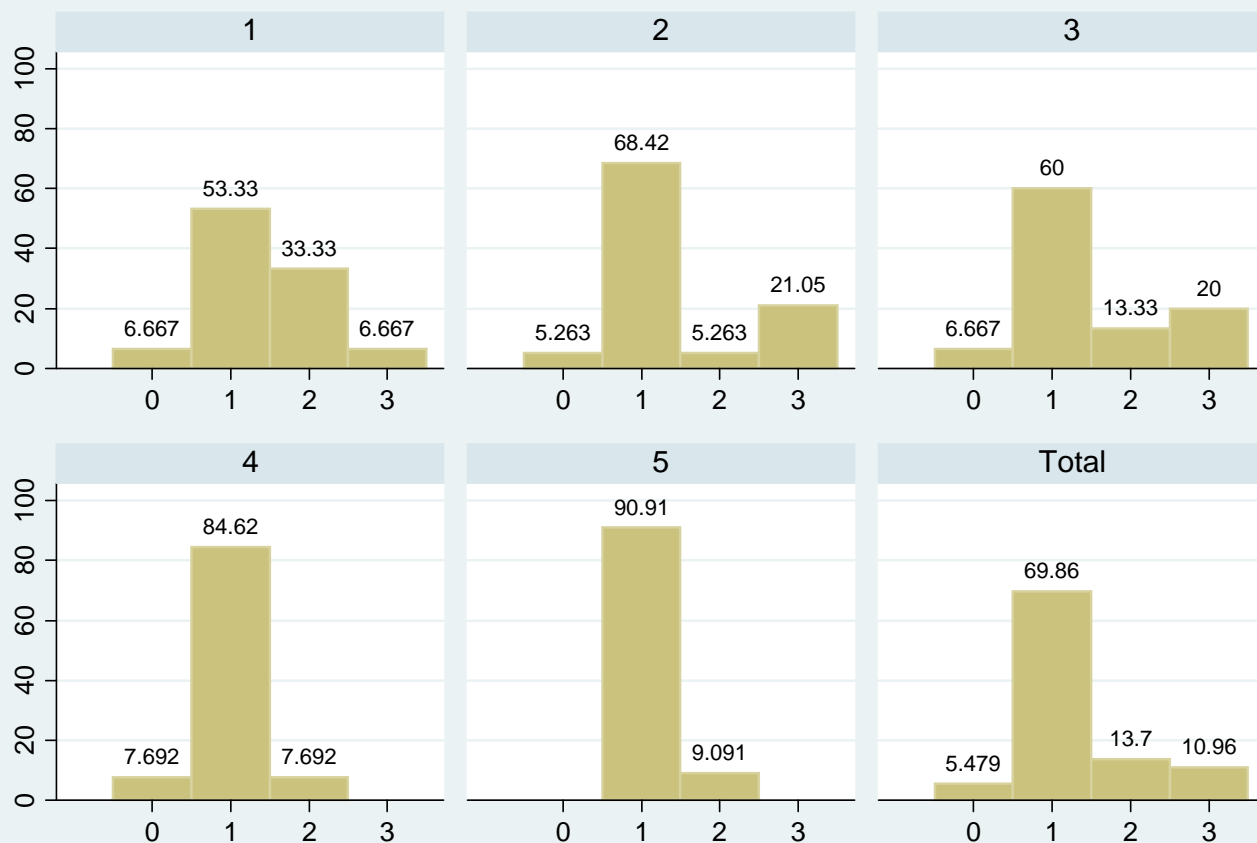
1= inutile  
2=non so  
3=utile

In generale il questionario mi sembra

# Conclusive remarks about new questionnaire



question f46



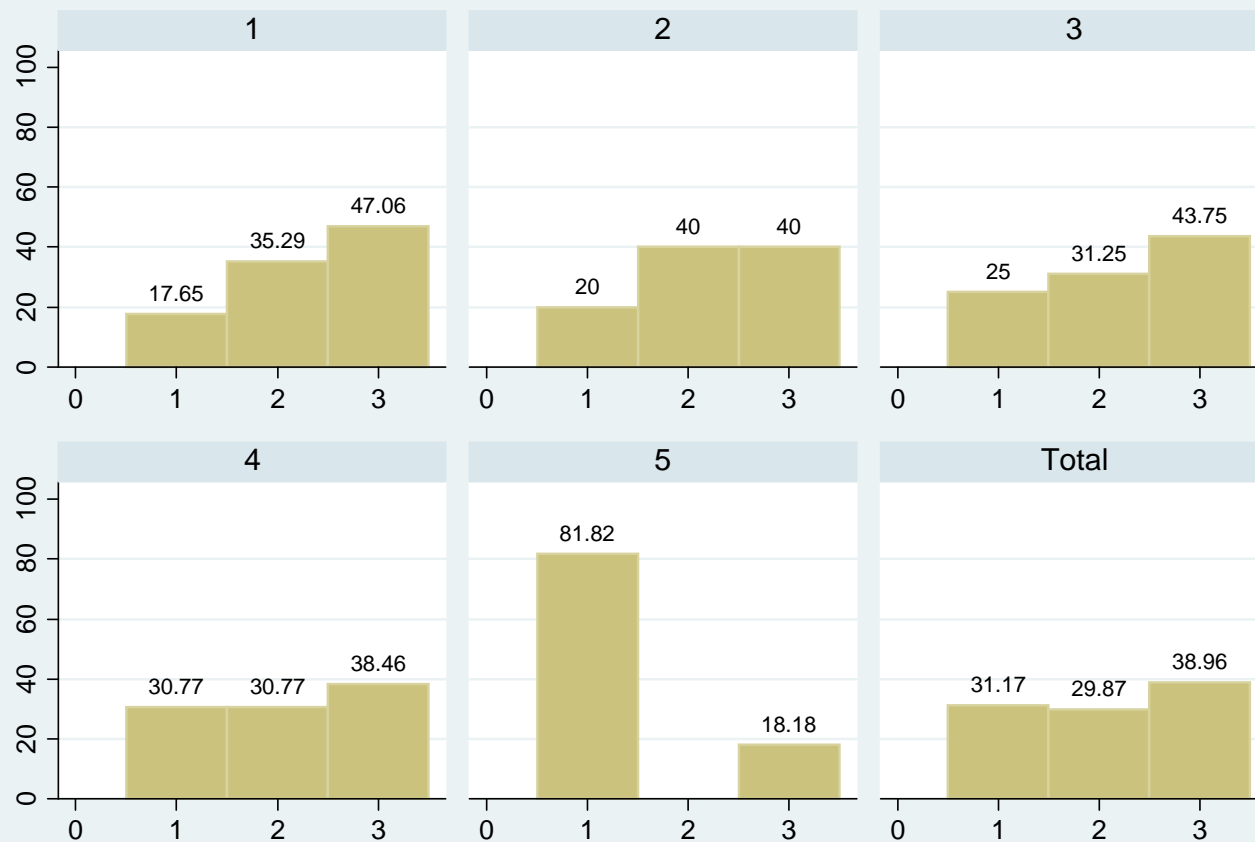
0=breve  
1=adeguato  
2=lungo  
3=molto lungo

In termini di dimensioni il questionario mi sembra:

# Conclusive remarks about new questionnaire



question f49



1=no  
2=non so  
3=sì

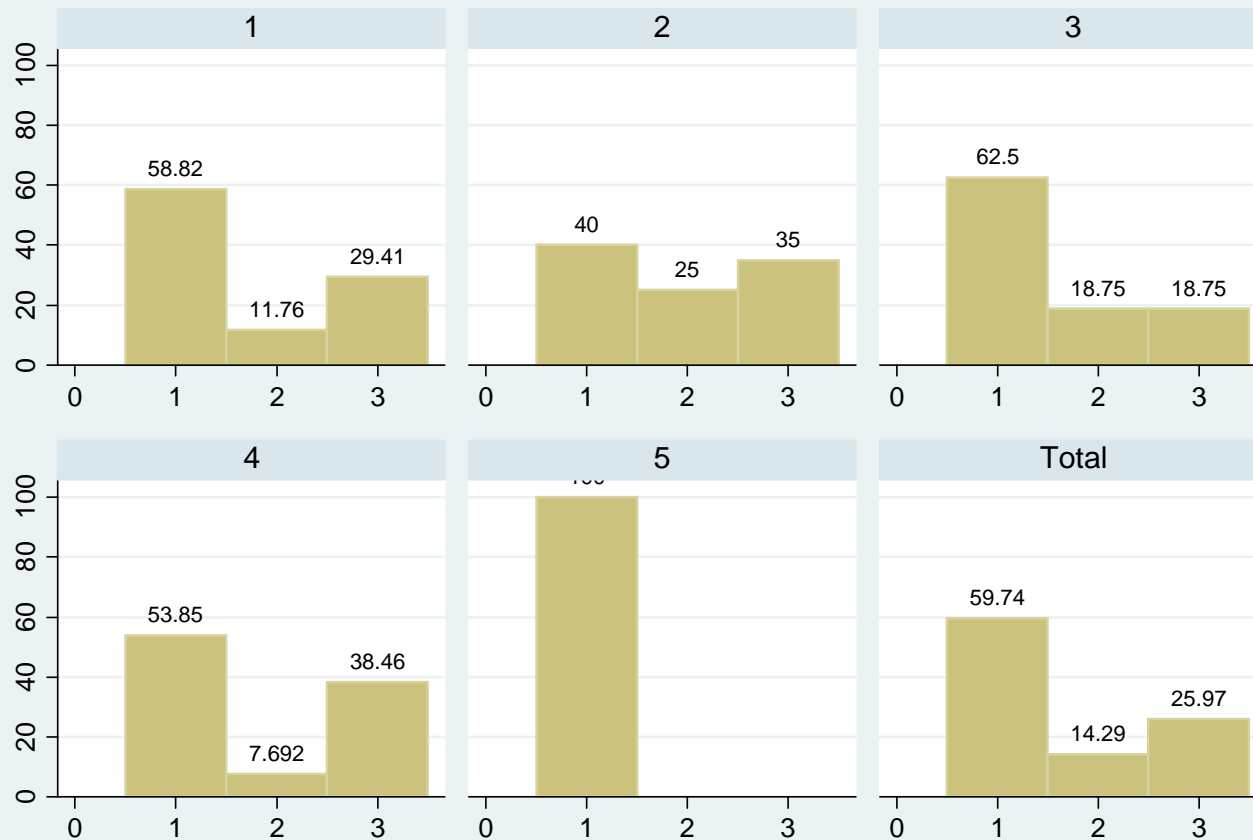
Penso che questo questionario possa essere migliorato:



# Conclusive remarks about new questionnaire



question f50



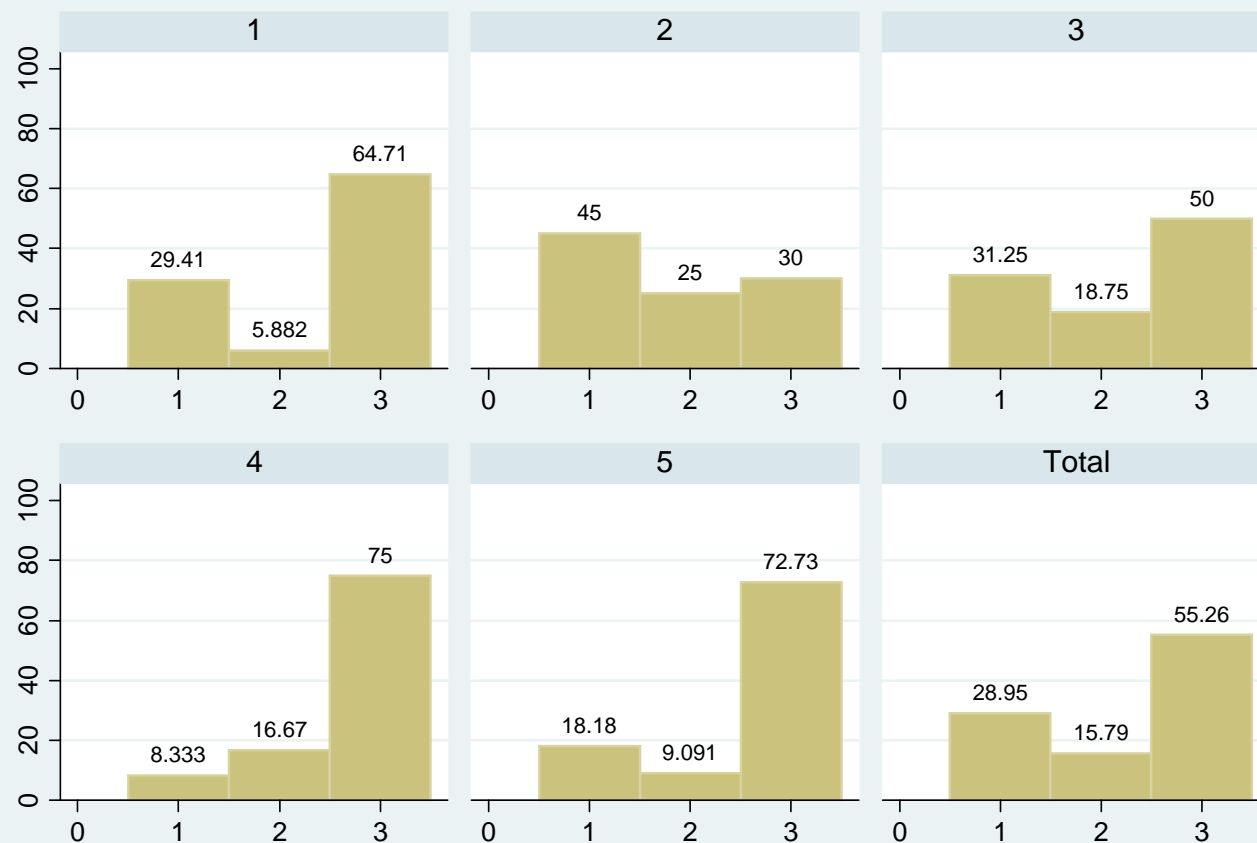
1=no  
2=non so  
3=sì

Penso che questo questionario vada totalmente rivisto

# Conclusive remarks about new questionnaire



question f51



1=no  
2=non so  
3=sì

Sono interessato ai risultati di questo questionario

# Results



**FOR TEACHERS**

**... NEXT TIME!!!**

# Conclusions



- The questionnaire is able to detect differences between schools and between classes in key items
- Some changes in the questionnaire have been advocated
- It would be interesting
  - To involve more schools and more classes
  - To administer the same questionnaire to the same students in the following years
    - ✦ But identification of the student would be required for optimal interpretation